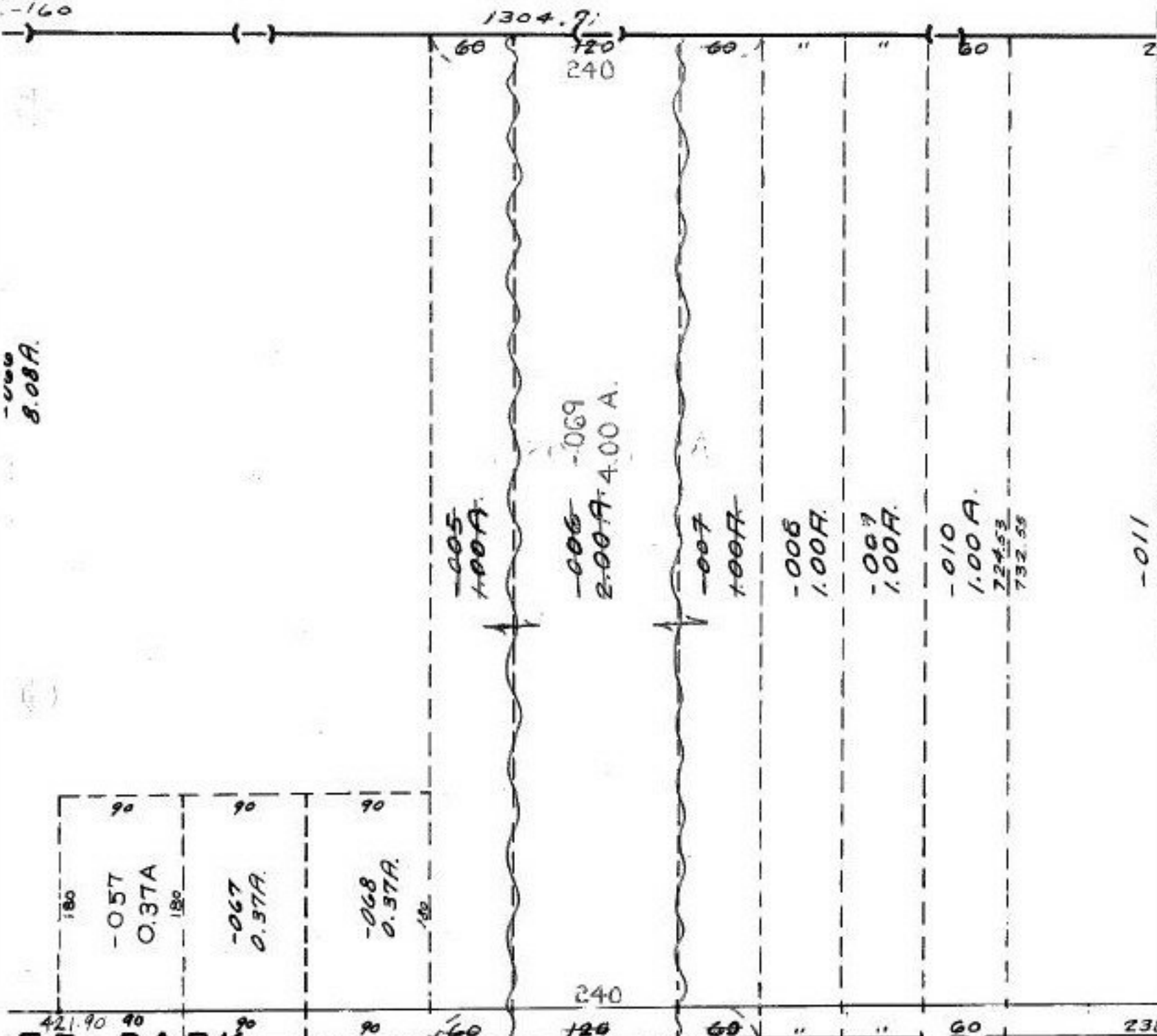


123
-160

-000
3.08A.



ER-PARK

SEE 5-A

THE THREE PARCELS WERE COMBINED
PER DEED VOL. 882 PG. 218

10/22/92
#20105-A

COMBINATION

APPROVED LORAIN CO. MAP DEPT.	
DATE 10/1/92	
PAGE 5-00-001-A	
BY T. HOLLIS	
VOID AFTER	20105-A

-011