

799.41

-045  
4.18 A.

795.87

ACREAGE CORRECTION PER SURVEY -046  
BY: RALPH GROMLEY  
CLOSURE : 1:536,397

888.53

ACCORD

216.50

100

50

100

50

100

50

100

50

PLAT 1.07A

4

0295

0082A

0082A

0082A

APPROVED	DATE 3-31-97	VOID AFTER
LOPAIN CO.	PAGE 12-00-082A	20096-A
MAP DEPT.	BY T. HOLLIS	

#20096A

400.27  
483.43

50

500

R.R.

100

PK 15.74 A

PK - 001

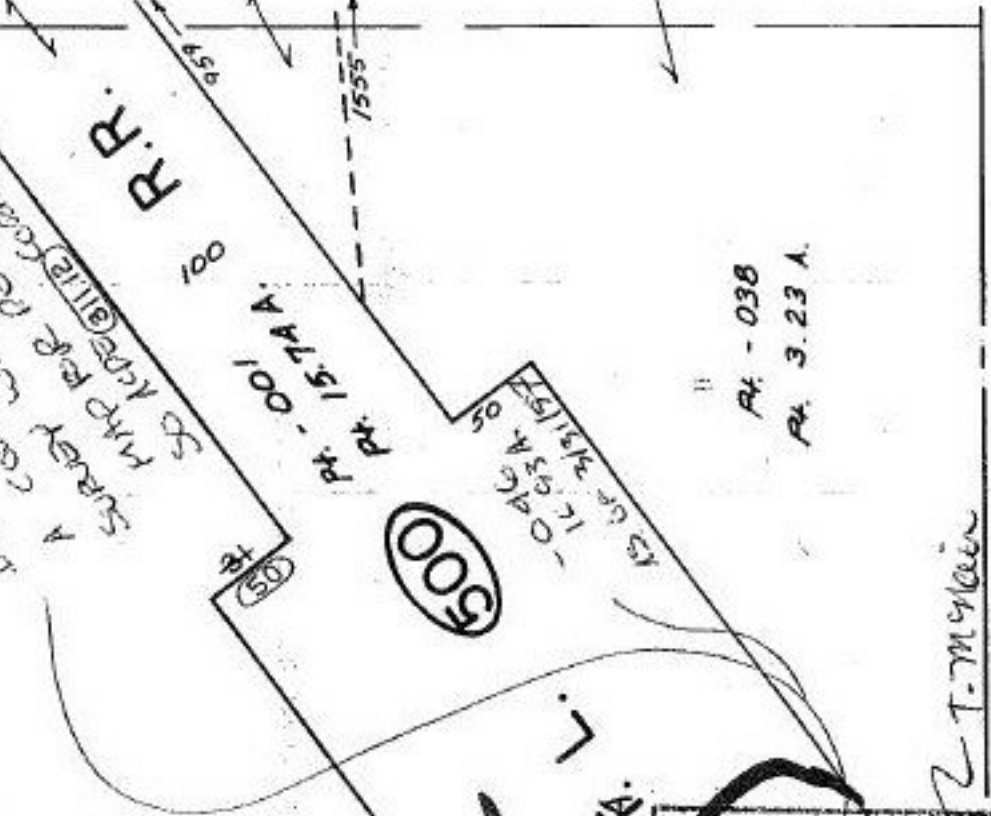
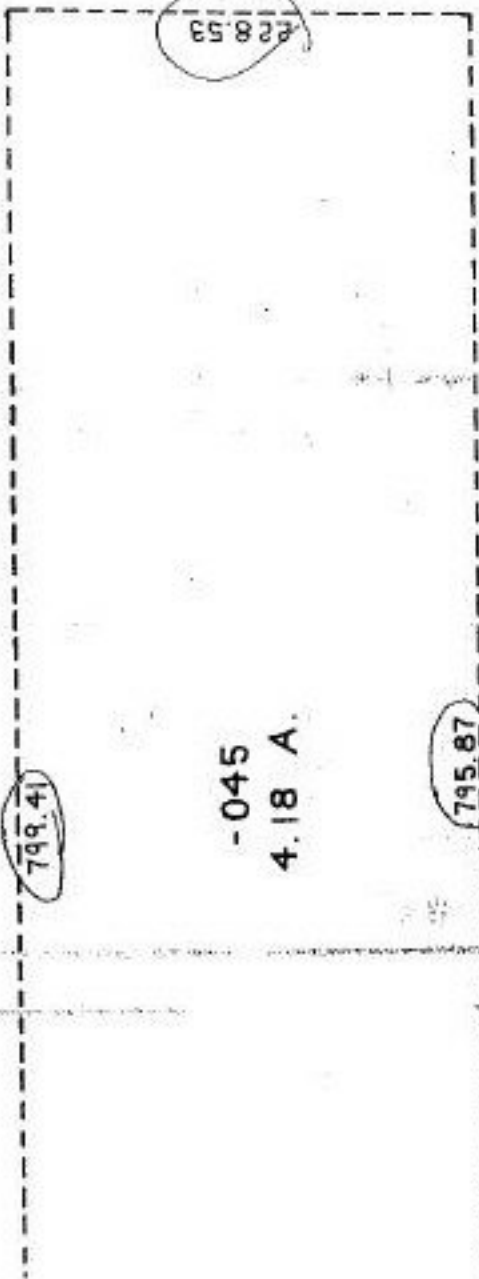
PK 15.74 A

PK 15.74 A

PK - 038

PK 3.23 A

THE SPOT FOR GAS WAS (500) OK  
BUT THE MAP NEVER SHOWS  
A CORRECTED BEC OF  
SWAY WHICH CAUSED  
MAP FOR RAILROAD IS WIP  
SWAY WHICH CAUSED MAP FOR RAILROAD IS WIP



SEE 12-00-082A

ST. 5

N