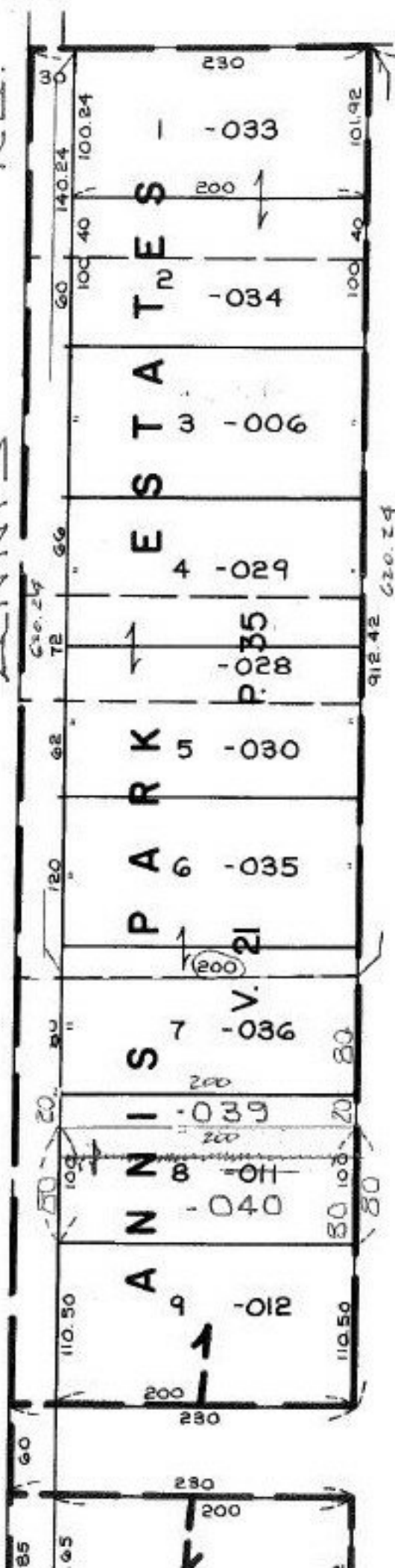


00-004-A

ANNIS RD.



09-00-004-102- PRIOR INST O.R. 482/97
 SURVEYED BY: BOUNDARY MAPBY KS ASSOC.
 C=1: INF.

SH 10/15/92 -003
 20092 33.37 A.

APPROVED
 LORAIN CO.
 MAP DEPT.
 DATE 9-23-92
 PAGE 9-00-004-B
 BY CAROLYN FRANCIS
 VOID AFTER # 20092