

PT. -054
PT. 5.25 A.

-053
0.77 A.

#20082-A

-044
9.56 A.
5.90 Ae.

ACREAGE CORRECTION FOR
LOWELL E. BENDER, #4978
CL. 1: 210,983

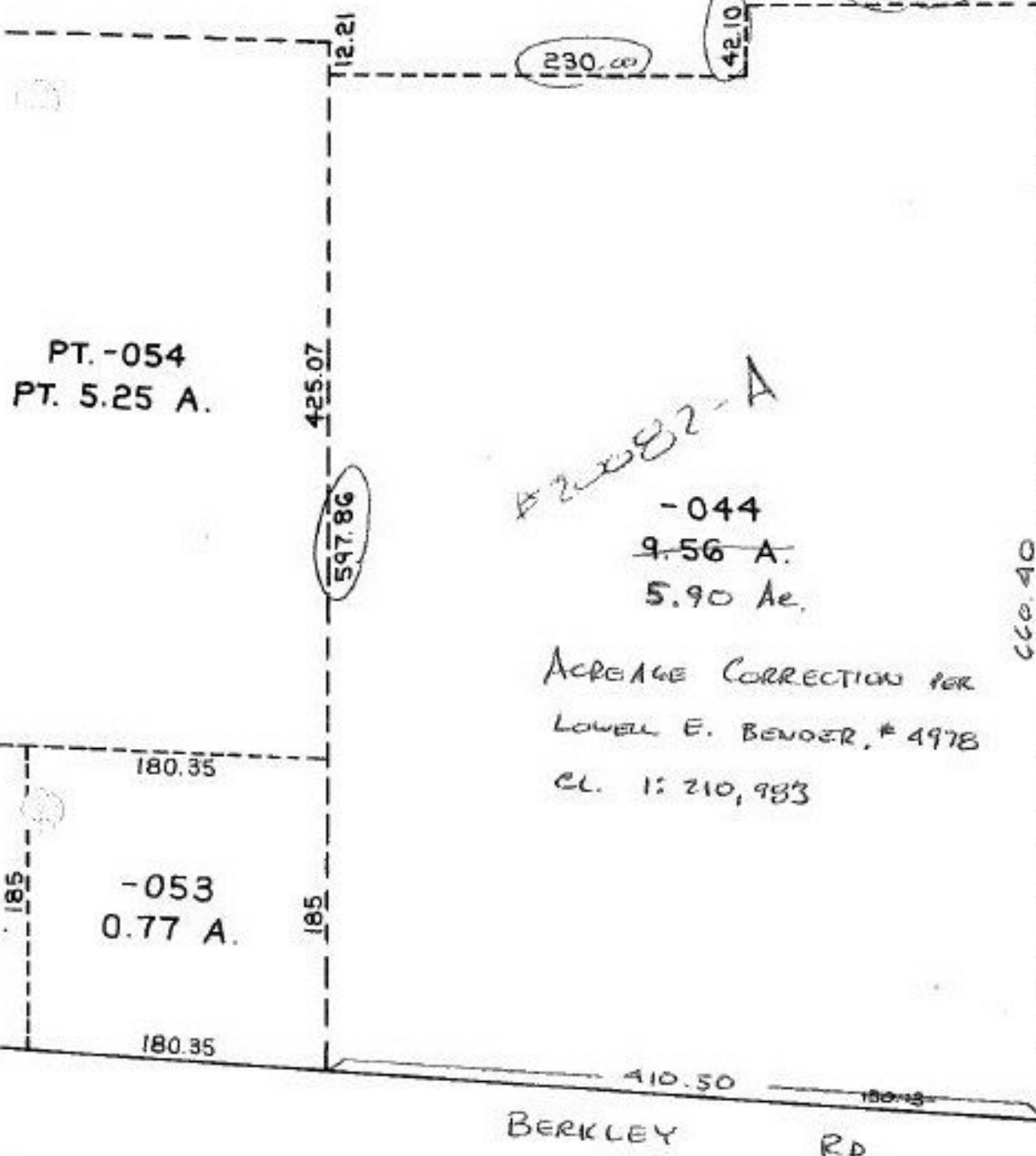
660.40

VERMILION
ROWLAND

ON

BER

1693	100.54	1651
1692	100.43	1652
1691	100.30	1653
1690	100.16	1654
100.01 1689		1655
104		1656
1688	99.87	1657
1687	99.75	1658
1686	99.58	1659
1685	99.44	1660
1684	99.29	1661
1683	99.10	1662
1682	99	1663
1681	98.86	1664
1680	98.72	1665
1679	98.57	1666
1678	98.43	1667
1677	98.28	1668
1676	98.14	1669
1675	98	1670
1674	97.86	1671



BERKLEY RD.

SH 10/15/92

#20082-A

~~ELAND-SANDUSKY (LAKE) (LIBERTY AVE.)~~

SEE 1-00-002-C

ACRE. CORR.

APPROVED
LORAIN CO.
MAP DEPT.
DATE 9-14-92
PAGE 100-002-A
BY T. Moran
WHD
APPR
20082 A