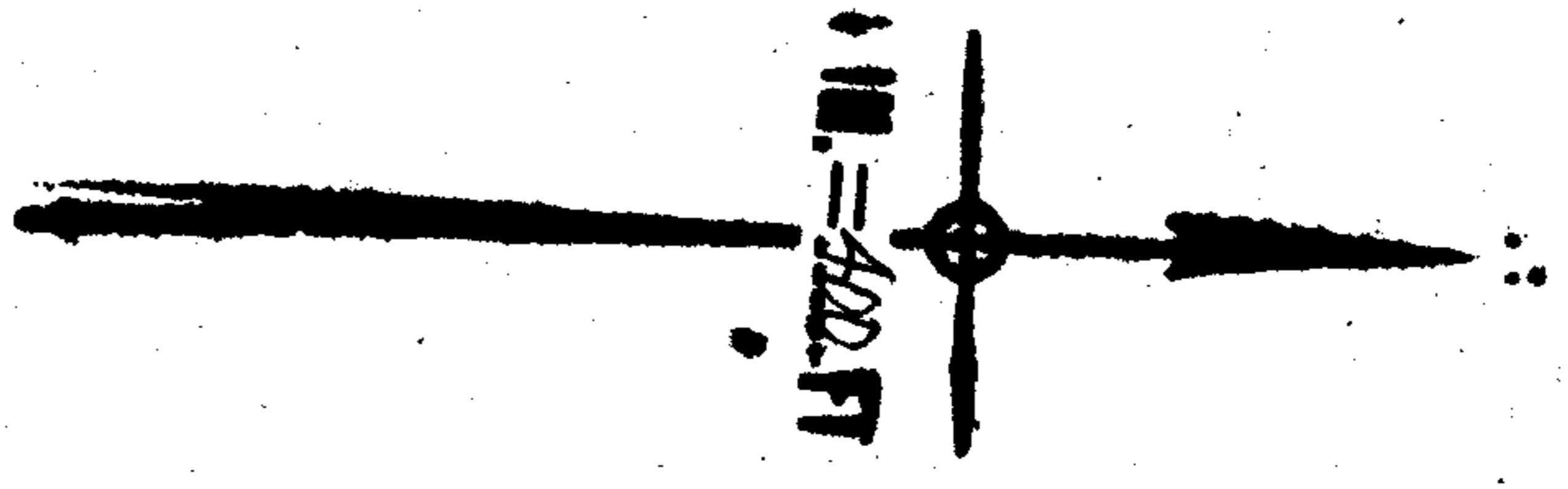


2008

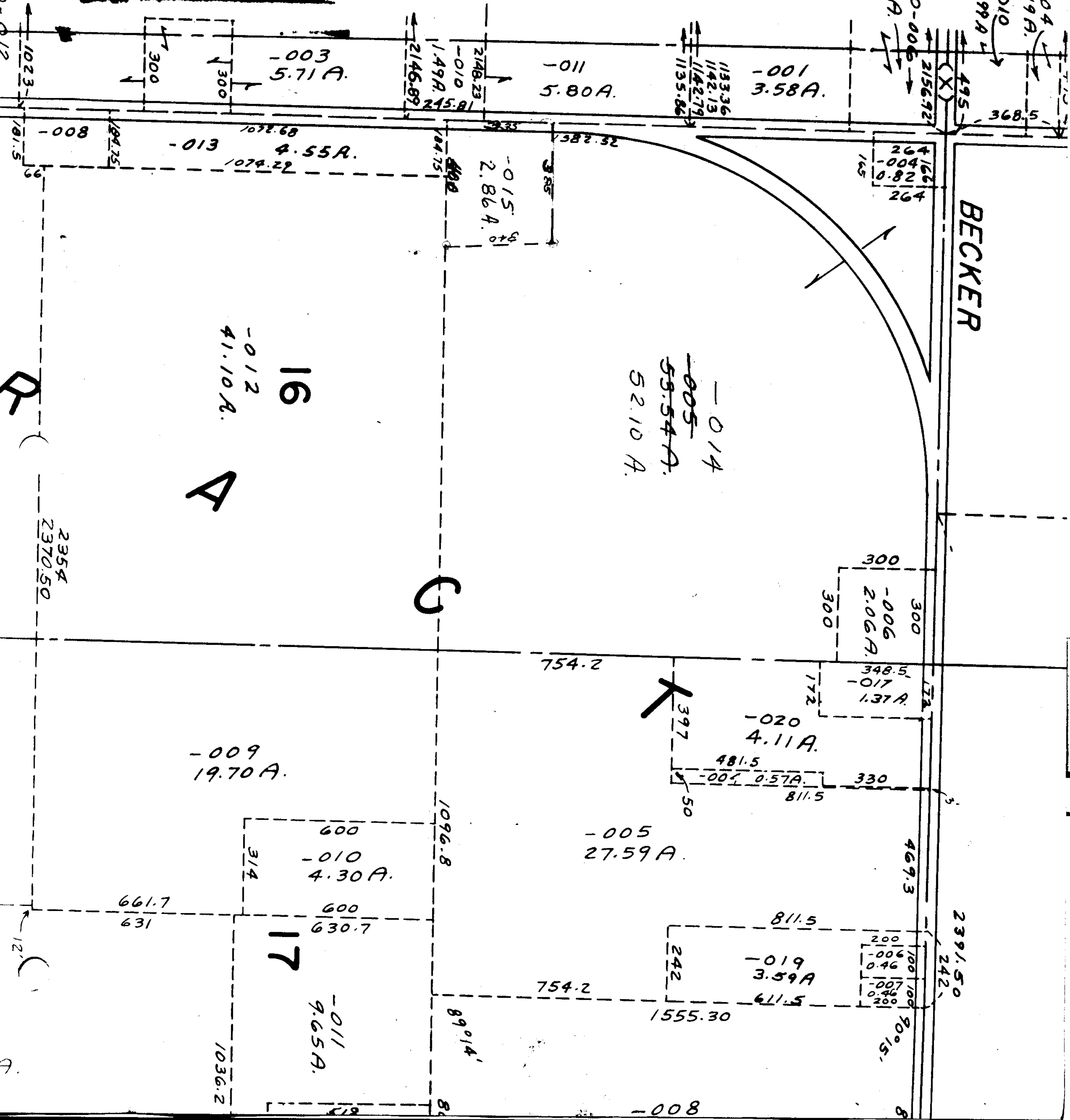
Pt. -004
Pt. 1.19 A.
Pt. -010
Pt. 2.99 A.

Pt. 08-12-015-000-005
Pt. 8.98 A.



7-31-86
L.L.

APPROVED
LORAIN CO.
MAP DEPT.
DATE 8-7-68
BY *[Signature]*
8-7-68 R.R.



Pt. 08-12-015-000-013

R

A

C

K

BECKER

2391.50
242

12'

-008