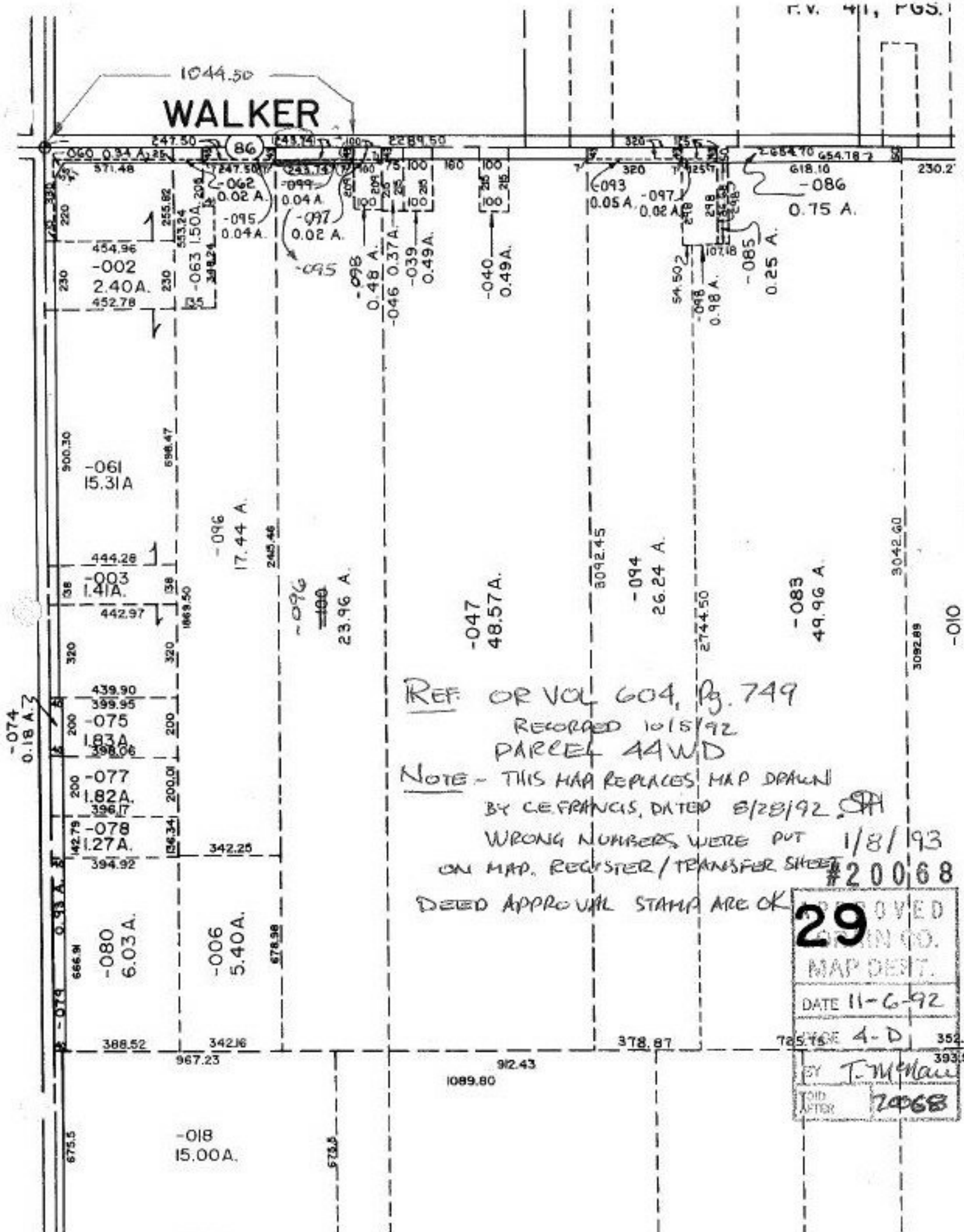


WALKER



REF. OR VOL 604, Pg. 749
 RECORDED 10/15/92
 PARCEL AAWD

NOTE - THIS MAP REPLACES MAP DRAWN
 BY C.E. FRANCIS, DATED 8/28/92. ~~SP~~
 WRONG NUMBERS WERE PUT 1/8/93
 ON MAP. REGISTER/TRANSFER SHEET #20068
 DEED APPROVAL STAMPS ARE OK

29	
APPROVED GRANN CO. MAP DEPT.	
DATE 11-6-92	
SCALE 4-D	
BY	T. McMan
VOID AFTER	20068

-074
0.18 A.3

-073
0.93 A.3

-075

500.30

38

200

142.75

666.91

675.5

-061
15.31A

-003
1.41A

-075
1.83A

-077
1.82A

-078
1.27A

-080
6.03A

388.52

-018
15.00A

454.96
-002
2.40A
452.78

500.30

38

200

142.75

666.91

675.5

571.48
-062
0.02 A

454.96
-063
1.50A
388.24

500.30

38

200

142.75

666.91

675.5

-018
15.00A

7247.50
-062
0.02 A

454.96
-063
1.50A
388.24

500.30

38

200

142.75

666.91

675.5

-018
15.00A

243.74
-099
0.04 A

454.96
-063
1.50A
388.24

500.30

38

200

142.75

666.91

675.5

-018
15.00A

243.74
-097
0.02 A

454.96
-063
1.50A
388.24

500.30

38

200

142.75

666.91

675.5

-018
15.00A

243.74
-095

454.96
-063
1.50A
388.24

500.30

38

200

142.75

666.91

675.5

-018
15.00A

243.74
-098
0.48 A

454.96
-063
1.50A
388.24

500.30

38

200

142.75

666.91

675.5

-018
15.00A

243.74
-046
0.37A

454.96
-063
1.50A
388.24

500.30

38

200

142.75

666.91

675.5

-018
15.00A

243.74
-039
0.49A

454.96
-063
1.50A
388.24

500.30

38

200

142.75

666.91

675.5

-018
15.00A

243.74
-040
0.49A

454.96
-063
1.50A
388.24

500.30

38

200

142.75

666.91

675.5

-018
15.00A

243.74
-093
0.05 A

454.96
-063
1.50A
388.24

500.30

38

200

142.75

666.91

675.5

-018
15.00A

243.74
-097
0.02 A

454.96
-063
1.50A
388.24

500.30

38

200

142.75

666.91

675.5

-018
15.00A

243.74
-095

454.96
-063
1.50A
388.24

500.30

38

200

142.75

666.91

675.5

-018
15.00A

243.74
-098
0.48 A

454.96
-063
1.50A
388.24

500.30

38

200

142.75

666.91

675.5

-018
15.00A

243.74
-046
0.37A

454.96
-063
1.50A
388.24

500.30

38

200

142.75

666.91

675.5

-018
15.00A

243.74
-039
0.49A

454.96
-063
1.50A
388.24

500.30

38

200

142.75

666.91

675.5

-018
15.00A

243.74
-040
0.49A

454.96
-063
1.50A
388.24

500.30

38

200

142.75

666.91

675.5

-018
15.00A

243.74
-093
0.05 A

454.96
-063
1.50A
388.24

500.30

38

200

142.75

666.91

675.5

-018
15.00A

243.74
-097
0.02 A

454.96
-063
1.50A
388.24

500.30

38

200

142.75

666.91

675.5

-018
15.00A

243.74
-095

454.96
-063
1.50A
388.24

500.30

38

200

142.75

666.91

675.5

-018
15.00A

243.74
-098
0.48 A

454.96
-063
1.50A
388.24

500.30

38

200

142.75

666.91

675.5

-018
15.00A

243.74
-046
0.37A

454.96
-063
1.50A
388.24

500.30

38

200

142.75

666.91

675.5

-018
15.00A

243.74
-039
0.49A

454.96
-063
1.50A
388.24

500.30

38

200

142.75

666.91

675.5

-018
15.00A

243.74
-040
0.49A

454.96
-063
1.50A
388.24

500.30

38

200

142.75

666.91

675.5

-018
15.00A

243.74
-093
0.05 A

454.96
-063
1.50A
388.24

500.30

38

200

142.75

666.91

675.5

-018
15.00A

243.74
-097
0.02 A

454.96
-063
1.50A
388.24

500.30

38

200

142.75

666.91

675.5

-018
15.00A

243.74
-095

454.96
-063
1.50A
388.24

500.30

38

200

142.75

666.91

675.5

-018
15.00A

243.74
-098
0.48 A

454.96
-063
1.50A
388.24

500.30

38

200

142.75

666.91

675.5