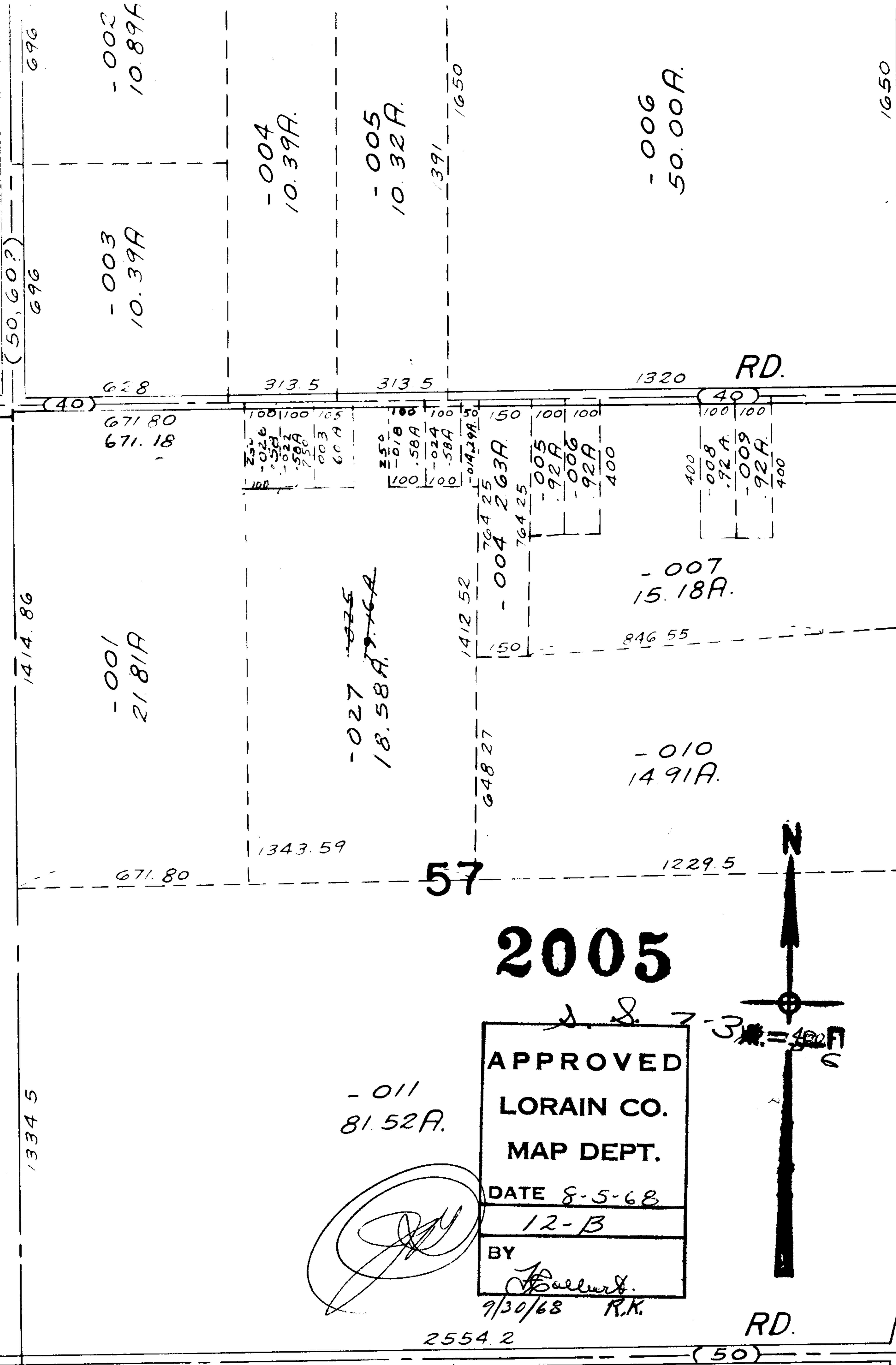


JAUQUAY



-002
10.89A

-003
10.39A

-004
10.39A

-005
10.32A

-006
50.00A

-001
21.81A

-027
18.58A

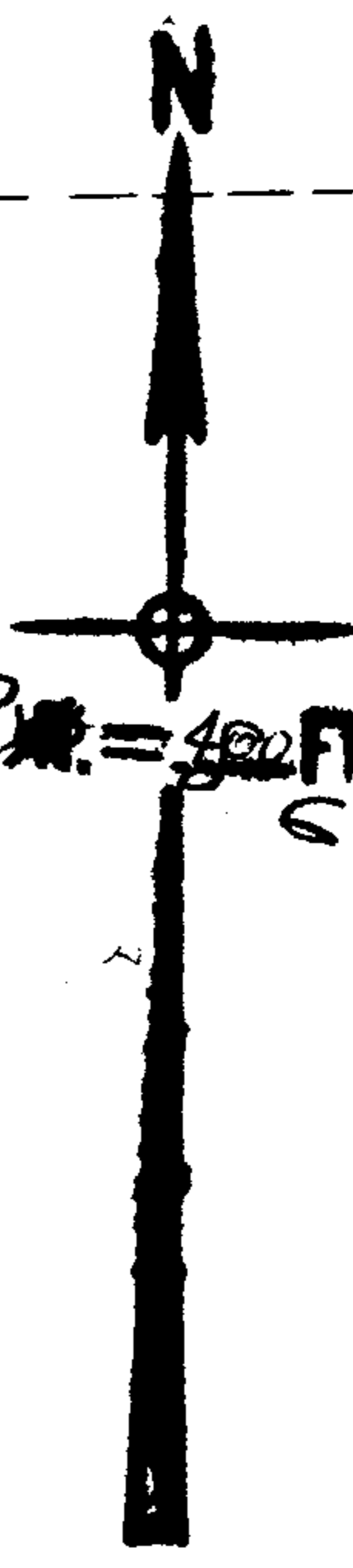
-007
15.18A

-010
14.91A

-011
81.52A

2005

APPROVED
 LORAIN CO.
 MAP DEPT.
 DATE 8-5-68
 12-B
 BY
[Signature]
 9/30/68 R.K.



1916
58
18.58

RD.

(60)