

40.00A.

LATTASBURG - ELYRIA

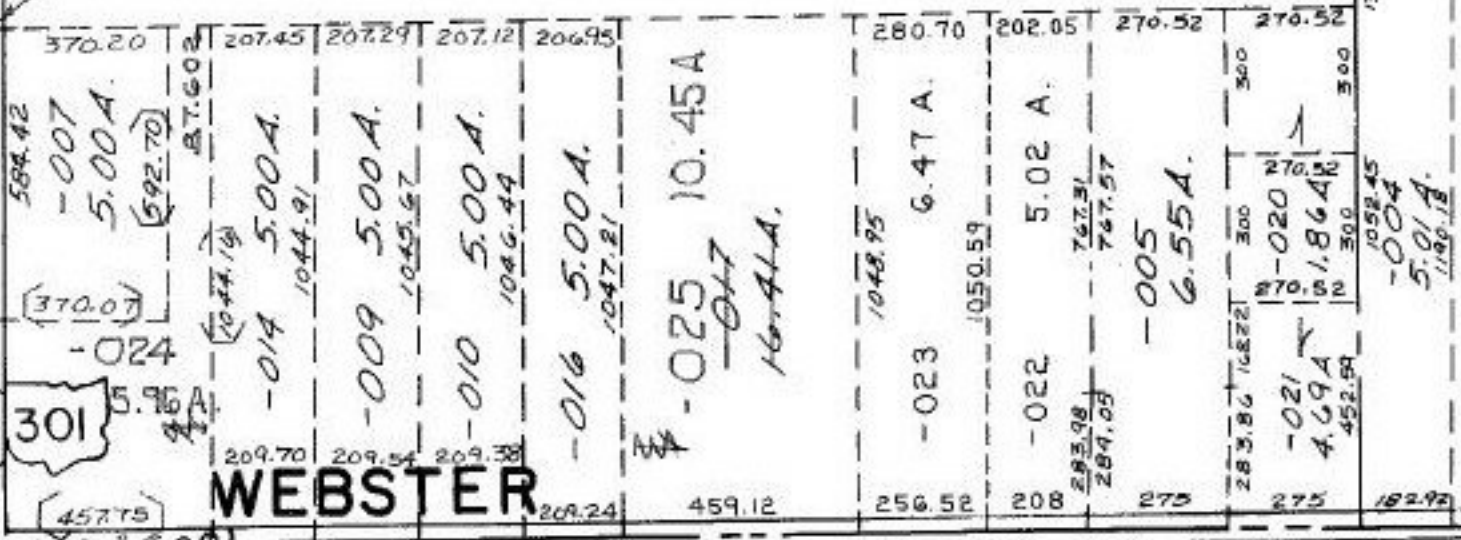
16.41A
5.96A
10.45A

- 001
50.00A.

- 002
50.00A.

95

RES.



WEBSTER

15-00-095-000- PRIOR INST: O.R.146/677
 SURVEYED BY: GARY E. PENFOUND REG. SURVEYOR
 C=1:204,381
 1972

10/9/92
 20037

APPROVED
 LORAIN CO.
 MAP DEPT.
 DATE 8-7-92
 PAGE 15-G
 CAROLYN
 BY FRANCIS
 VOID AFTER # 20037