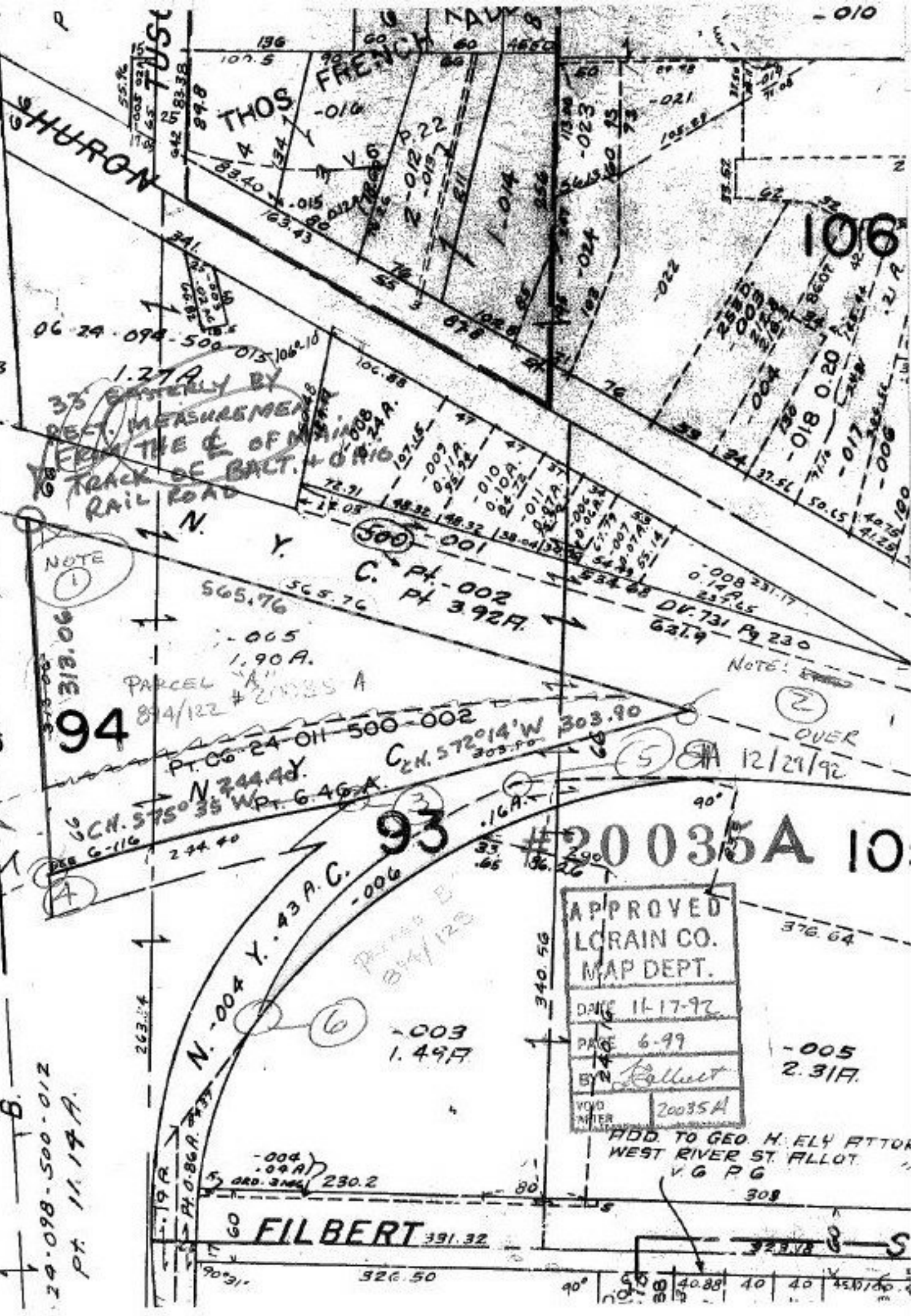


PT 06-24-011-500-002

PT 6.46 A.

24-098-500-012
PT. 11.17 A.



MEASUREMENTS TAKEN FROM THE CENTER OF TRACK OF BALT. RAILROAD

NOTE (1)

94

93

106

APPROVED
LORAIN CO.
MAP DEPT.
DATE 11-17-92
PAGE 6-99
BY *Balliet*
VOID AFTER 20035A

ADD TO GEO. H. ELY ATTOR
WEST RIVER ST. ALLOT.
V.G.P.G.

FILBERT 391.32

-005
2.31A.

NOTE: (2)

OVER 12/29/92

-010