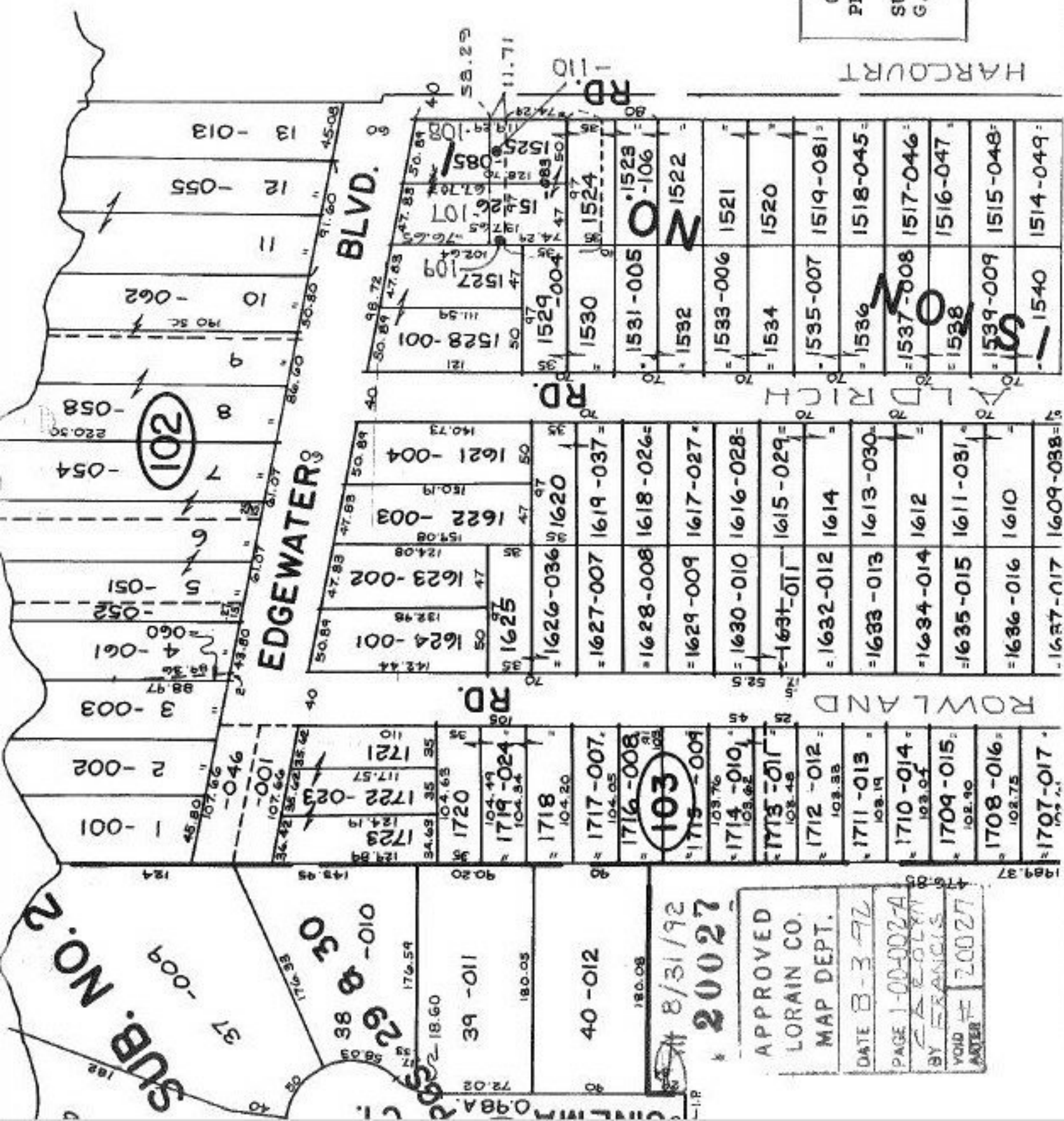


01-00-002-105-
 PRIOR INST:
 O.R. 296/162
 SURVEYED BY MICHAEL
 G. HURA REG. SURV.
 C-1: 99,908



SUB. NO. 2

37 -009

38 -010

39 -011

40 -012

41 -013

42 -014

43 -015

44 -016

45 -017

46 -018

47 -019

48 -020

49 -021

50 -022

51 -023

52 -024

APPROVED
 LORAIN CO.
 MAP DEPT.
 DATE 8-3-92
 PAGE 1-00-0027A
 BY FRANCIS
 VOID AFTER # 20027

APPROVED
 LORAIN CO.
 MAP DEPT.
 DATE 8-3-92
 PAGE 1-00-0027A
 BY FRANCIS
 VOID AFTER # 20027

APPROVED
 LORAIN CO.
 MAP DEPT.
 DATE 8-3-92
 PAGE 1-00-0027A
 BY FRANCIS
 VOID AFTER # 20027

APPROVED
 LORAIN CO.
 MAP DEPT.
 DATE 8-3-92
 PAGE 1-00-0027A
 BY FRANCIS
 VOID AFTER # 20027

APPROVED
 LORAIN CO.
 MAP DEPT.
 DATE 8-3-92
 PAGE 1-00-0027A
 BY FRANCIS
 VOID AFTER # 20027

HARPCOURT

ALDRICH

ROWLAND

BLVD.

EDGEWATER

102

103

20027

8/31/92

APPROVED

LORAIN CO.

MAP DEPT.

DATE 8-3-92

PAGE 1-00-0027A

BY FRANCIS

VOID AFTER # 20027

20027

20027

20027