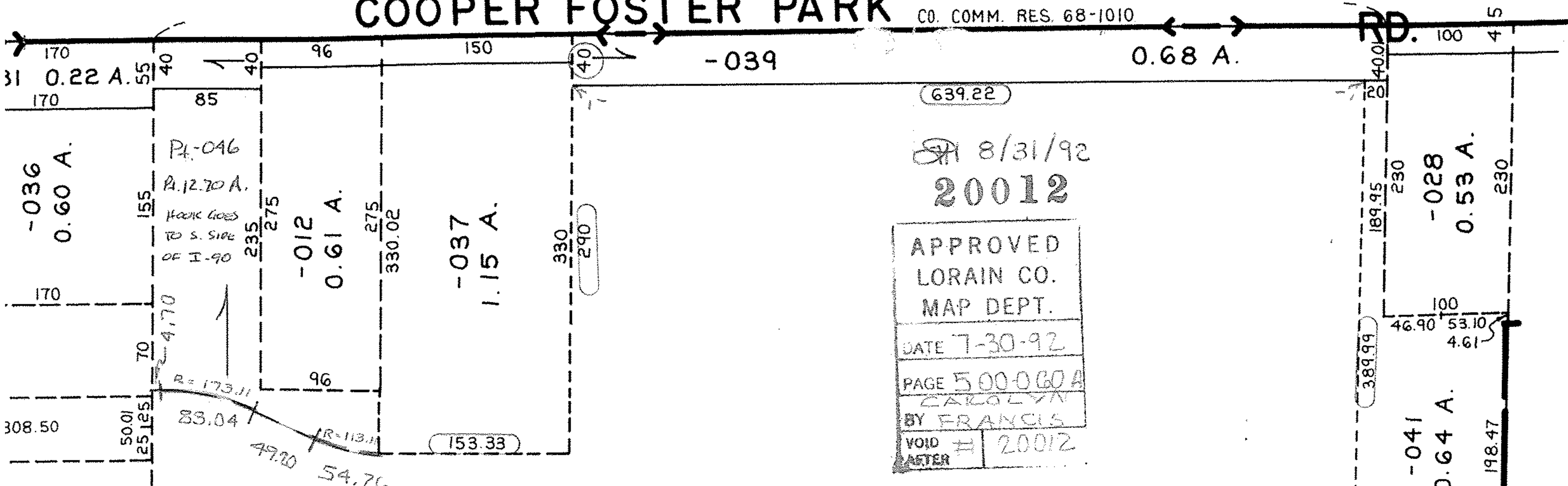


# COOPER FOSTER PARK

SEE 2-02-005-A

CO. COMM. RES. 68-1010

991.12



8/31/92  
**20012**  
 APPROVED  
 LORAIN CO.  
 MAP DEPT.  
 DATE 7-30-92  
 PAGE 500-060A  
 CAROLYN  
 BY FRANCIS  
 VOID AFTER # 20012

- 044	0.86 A	39.25 A	042	51.56 A
	0.39 A	0.39 A	SPLIT	38.86 A
	0.47 A	3.86 A		12.70 A

AC. OUT OF -042 38.86 A  
 - 044 0.39 A  
39.25 A

05-00-060-101- PRIOR INST: 99/39  
 SURVEYED BY: NORMAN R. HURA & ASSOC.  
 C=1: 1074,314

8/31/92  
**20012**  
 APPROVED  
 LORAIN CO.  
 MAP DEPT.  
 DATE 7-30-92  
 PAGE 500-060A  
 CAROLYN  
 BY FRANCIS  
 VOID AFTER # 20012

-045  
 39.25  
 # 20012  
 -0.39  
 51.56 A.

-1188.09