

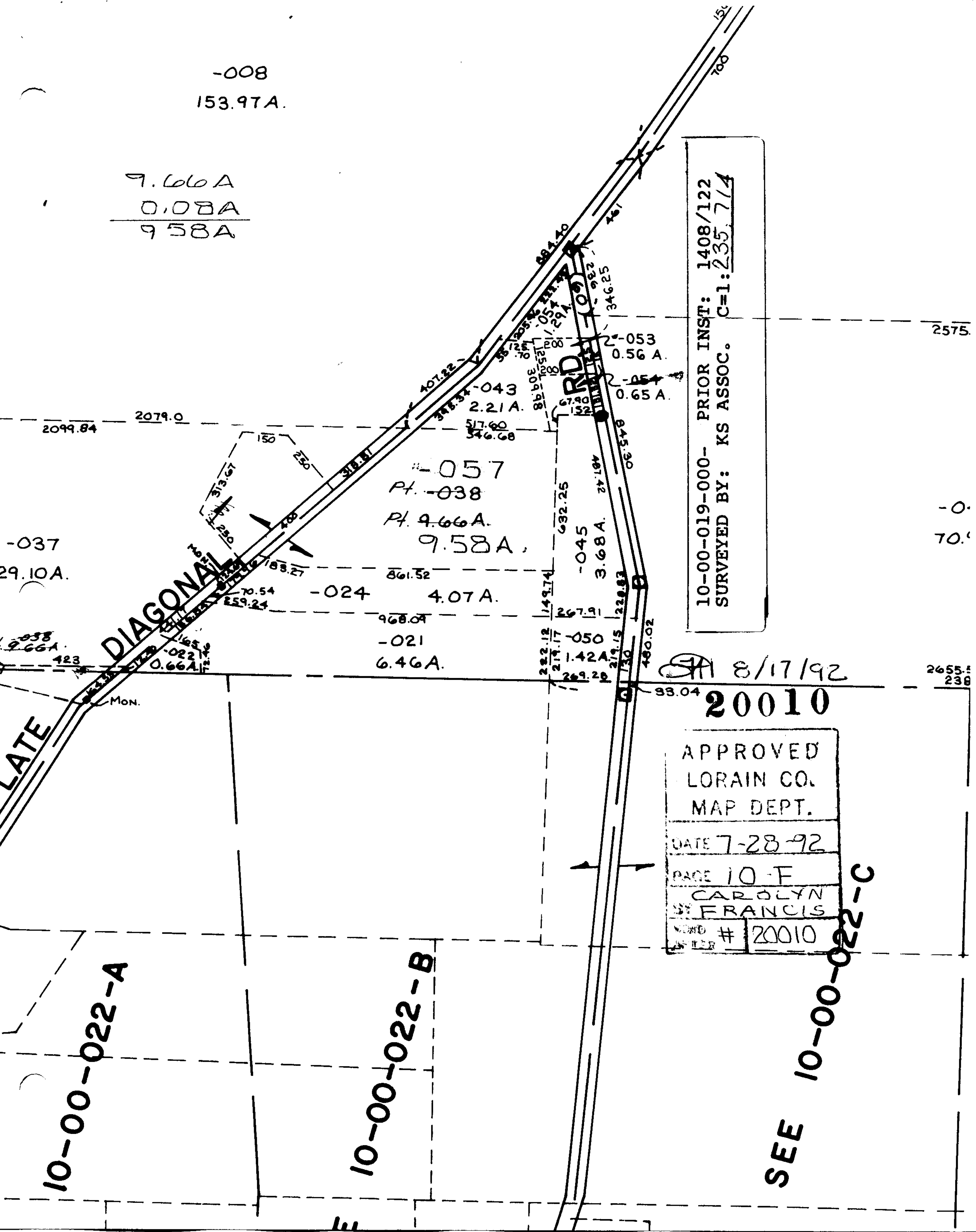
-008  
153.97A.

9.66A  
0.08A  

---

9.58A

10-00-019-000- PRIOR INST: 1408/122  
SURVEYED BY: KS ASSOC. C=1:235,714



-037  
29.10A.

9.66A  
423

-057  
Pt. -038  
Pt. 9.66A.  
9.58A.

-024 4.07A.  
-021 6.46A.

-045 3.68A. 24.184  
-050 1.42A  
222.12  
219.17  
269.29  
149.74  
228.83  
480.02

8/17/92

20010

APPROVED  
LORAIN CO.  
MAP DEPT.  
DATE 7-28-92  
PAGE 10-F  
CAROLYN  
ST FRANCIS  
# 20010

10-00-022-A

10-00-022-B

SEE 10-00-022-C

2575.

-0.  
70.

2655.4  
238