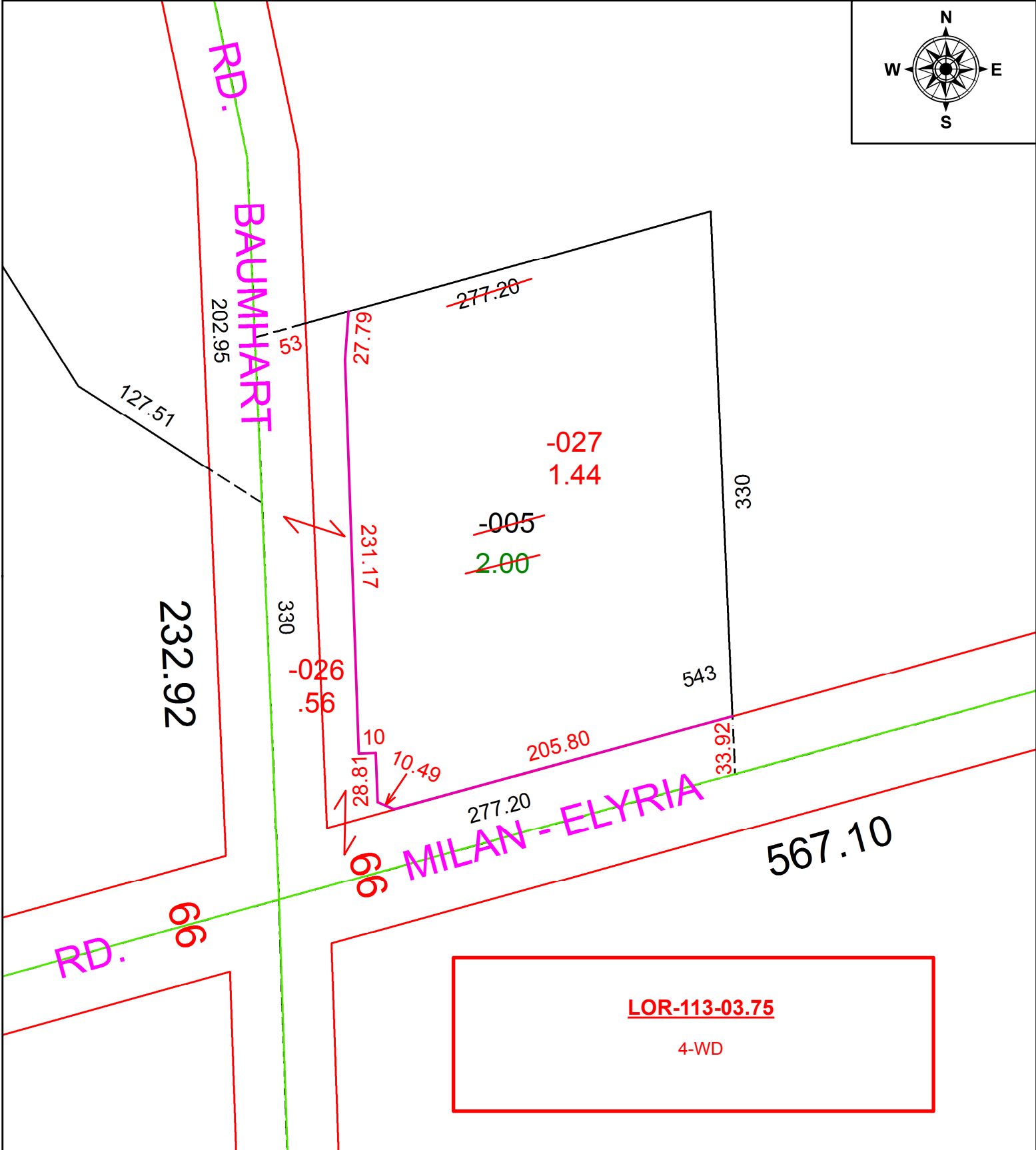
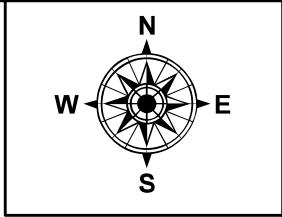


PARENT PARCEL: 08-00-087-000-005

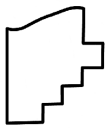
CHILD PARCEL: 08-00-087-000-026, -027

STARTING POINT: INTERSECTION OF C/L OF S.R.113 AND C/L OF BAUMHART RD.

20-00770



LOR-113-03.75
4-WD



SPLITS/DEEDS PROCESSED
LORAIN COUNTY TAX MAP DEPARTMENT
226 MIDDLE AVE. ELYRIA, OH

SURVEYED BY: JEFFREY M. BAIRD
CLOSURE: 1:167,816
MAP PAGE(S): 8-00-087
APPROVED BY: RRM DATE: 7-7-20
SCALE: 1" = 75' PRIOR INSTRUMENT: DV 1291/88