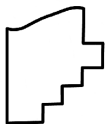
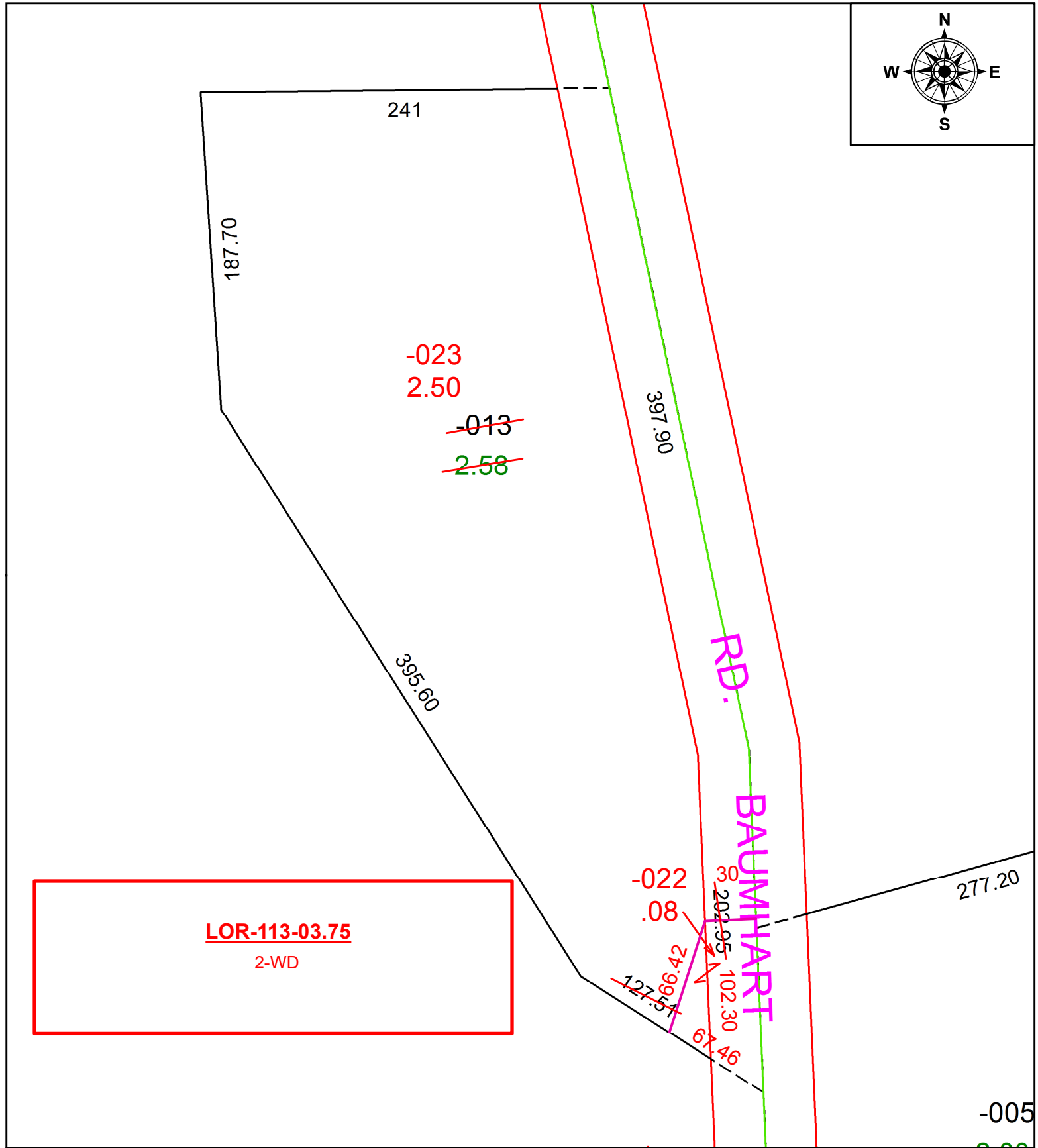
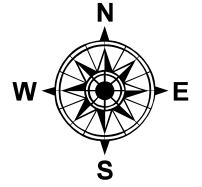


PARENT PARCEL: 08-00-087-000-013

CHILD PARCEL: 08-00-087-000-022, -023

STARTING POINT: INTERSECTION OF C/L OF S.R.113 AND C/L OF BAUMHART RD.

20-00768



**SPLITS/DEEDS PROCESSED**  
LORAIN COUNTY TAX MAP DEPARTMENT  
226 MIDDLE AVE. ELYRIA, OH

SURVEYED BY: JEFFREY M. BAIRD  
CLOSURE: 1: 43,373  
MAP PAGE(S): 8-00-087  
APPROVED BY: RRM DATE: 7-7-20  
SCALE: 1" = 75' PRIOR INSTRUMENT: 20170617475