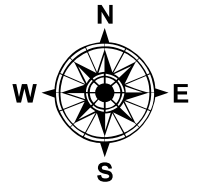


PARENT PARCEL: 08-00-087-000-014

CHILD PARCEL: 08-00-087-000-020, -021

STARTING POINT: INTERSECTION OF C/L OF S.R.113 AND C/L OF BAUMHART RD.

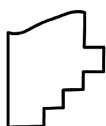
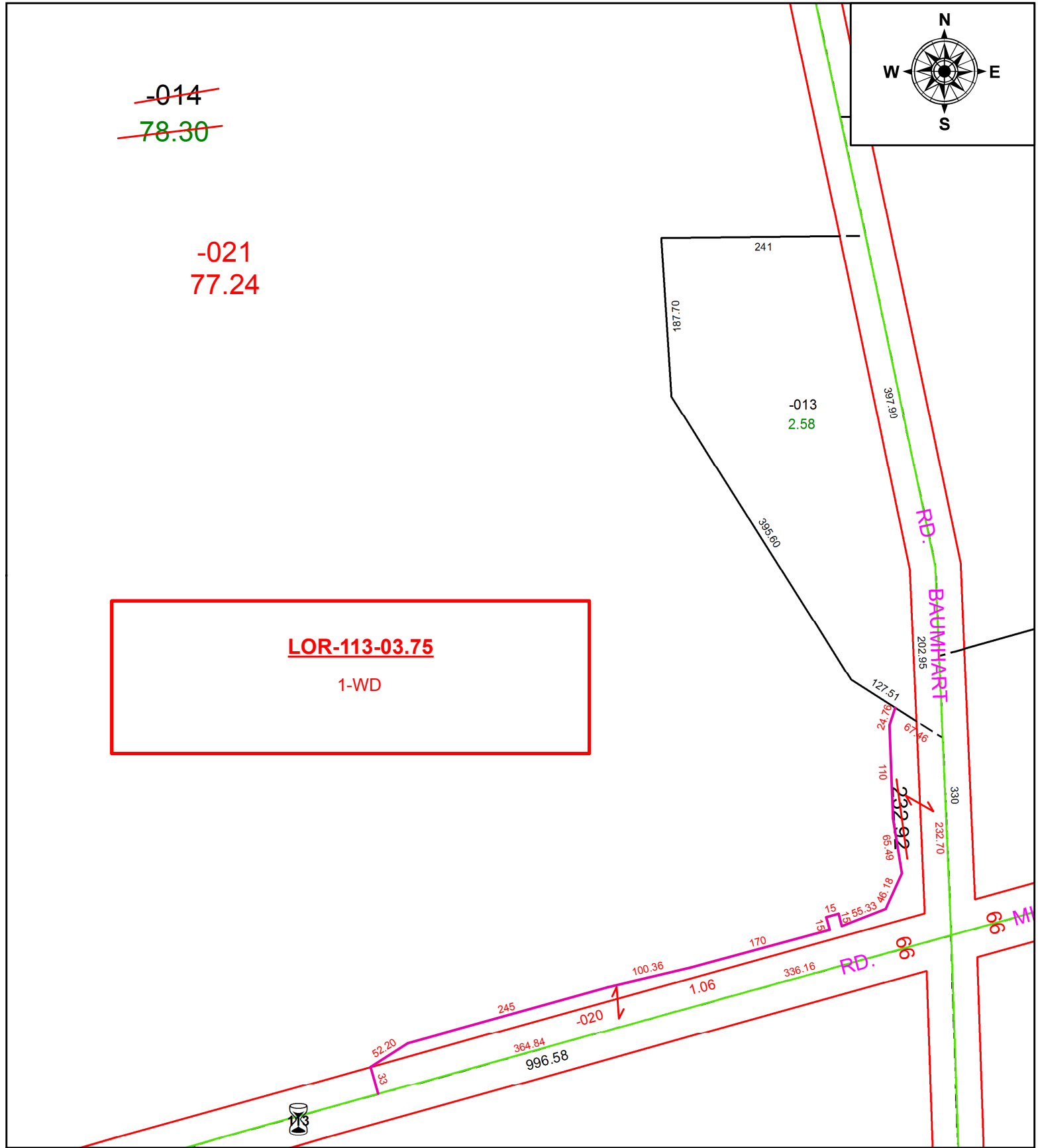
20-00767



~~-014~~
~~78.30~~

-021
77.24

LOR-113-03.75
1-WD



SPLITS/DEEDS PROCESSED
LORAIN COUNTY TAX MAP DEPARTMENT
226 MIDDLE AVE. ELYRIA, OH

SURVEYED BY: JEFFREY M. BAIRD

CLOSURE: 1:263,286

MAP PAGE(S): 8-00-087

APPROVED BY: RRM DATE: 7-7-20

SCALE: 1" = 150 PRIOR INSTRUMENT: 20190726437