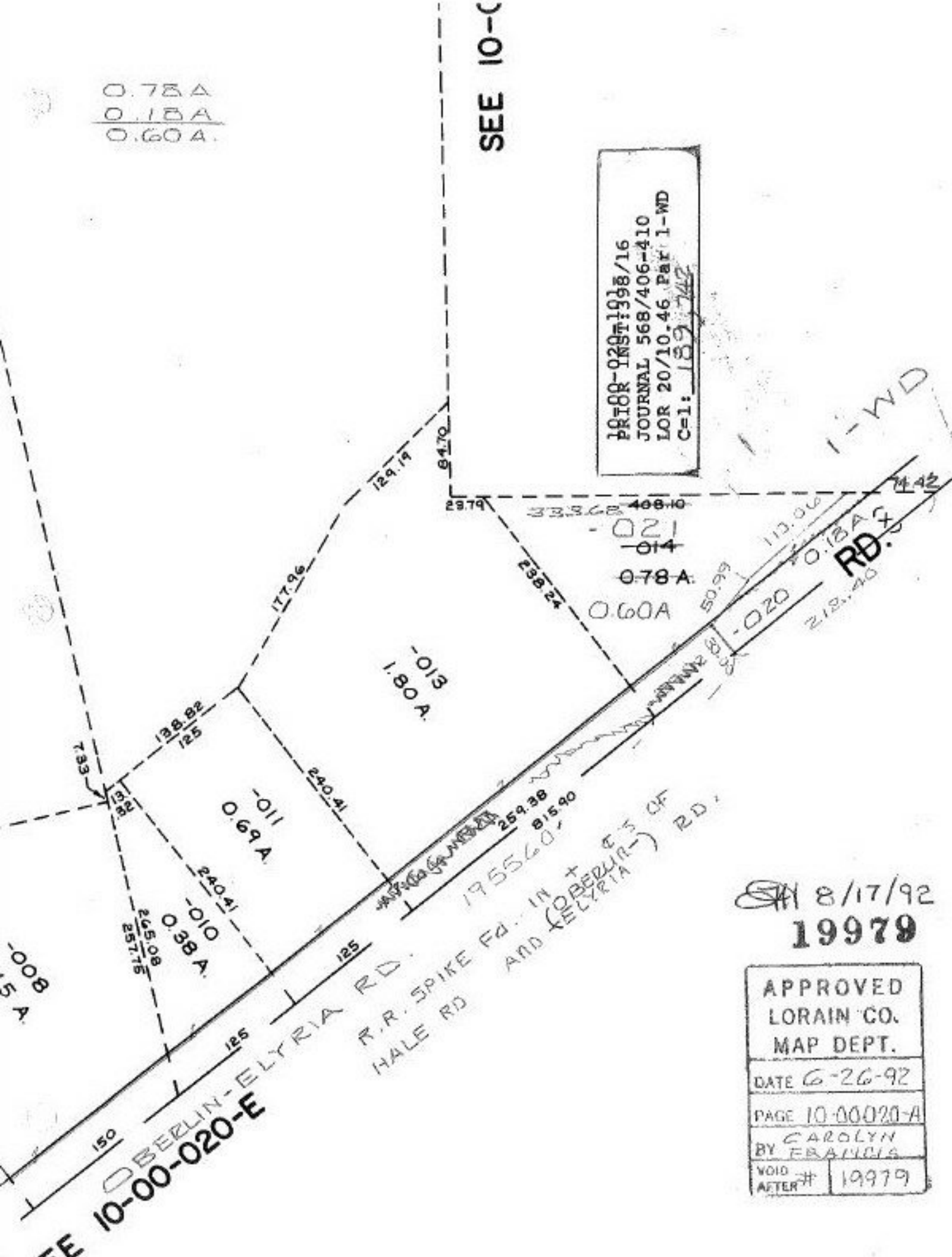


0.78A
 0.18A
 0.60A

SEE 10-C

PRIOR-1297:1998/16
 JOURNAL 568/406-410
 LOR 20/10.46 PAR 1-WD
 C-1: 189-742



8/17/92
 19979

APPROVED
 LORAIN CO.
 MAP DEPT.
 DATE 6-26-92
 PAGE 10-00020-A
 BY CAROLYN
 FRANCIS
 VOID AFTER # 19979

195560
 IN + E 3 OF
 (BERLIN-)
 ELYRIA RD.