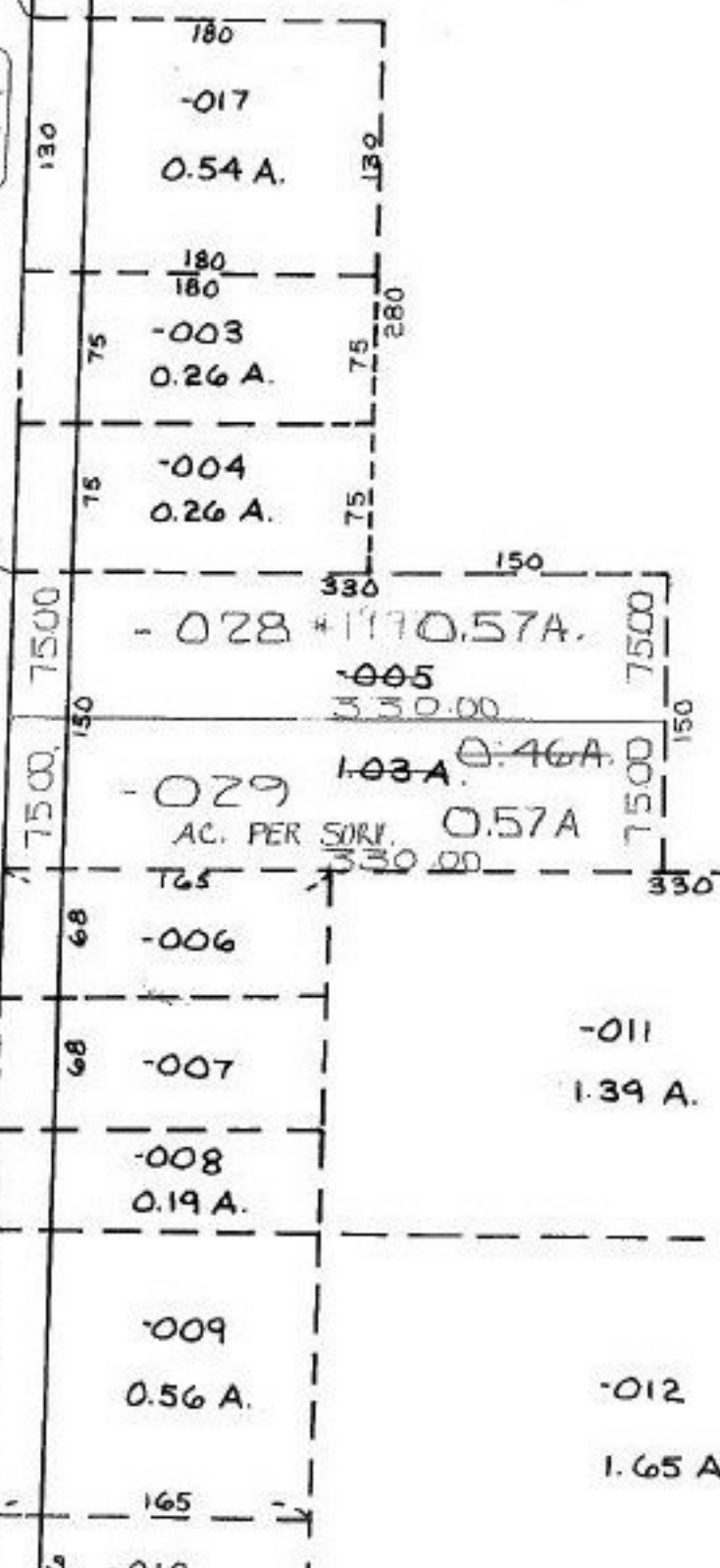


ELM ST.

515.14

ST. 235.14
233.96



1.03 A
 0.57 A
~~0.46 A~~

0.57 A PER SURVEY
 C=1:INF

16-00-003-101- PRIOR INST:
 SURVEYED BY: DANE A. HAPONEK REG. SURVEYOR
 1 & 2, C=1: INF.

9/2/92
 19977

APPROVED
 LORAIN CO.
 MAP DEPT.
 DATE 6-25-92
 PAGE 16-00-003 A
 BY CAROLYN FRANCIS
 VOID AFTER # 19977