

PL. -008  
PL. 10.03A.

3211.63

PL. -009  
PL. 10.02A.

PL. -026  
PL. 13.50 A.

~~PL. -022~~  
~~PL. 13.75 A.~~

1965.08

105

N. 89° 59' 40" E.

2046.29

8/21/92

#19944

APPROVED  
LORAIN CO.  
MAP DEPT.

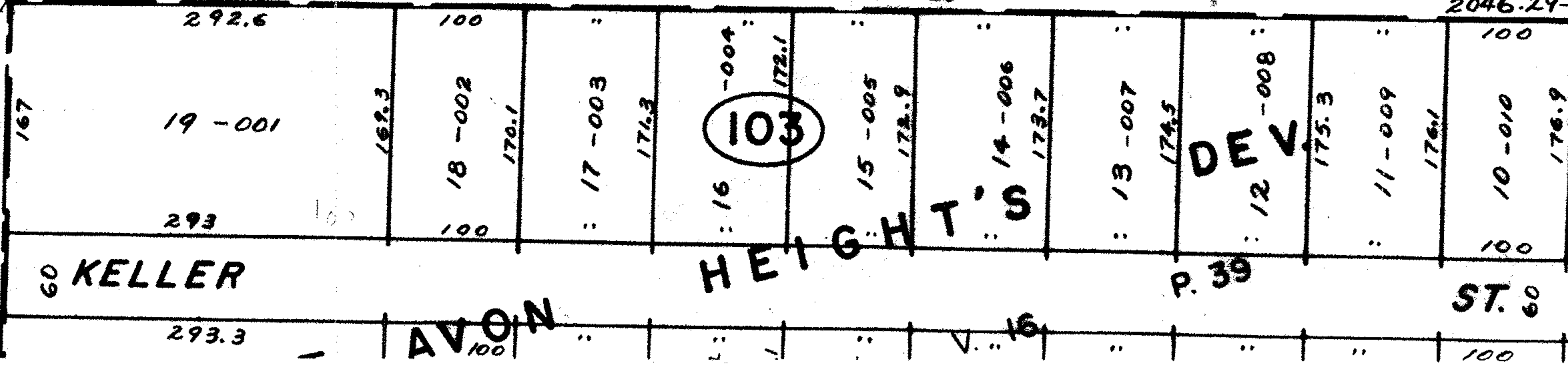
DATE 6-12-92

PAGE 4.00-023-A

BY T. McVain

VOID AFTER 1994

N. 0° 36' E



60 KELLER

AVON

HEIGHTS

P. 39

ST. 60