

NOTE: PROCESS #19943 AHEAD OF THIS SPLIT TO  
KEEP ASSIGNED NUMBERS IN SEQUENCE.  
FIRST - SPLIT P/W, THEN COMBINE REMAINDERS

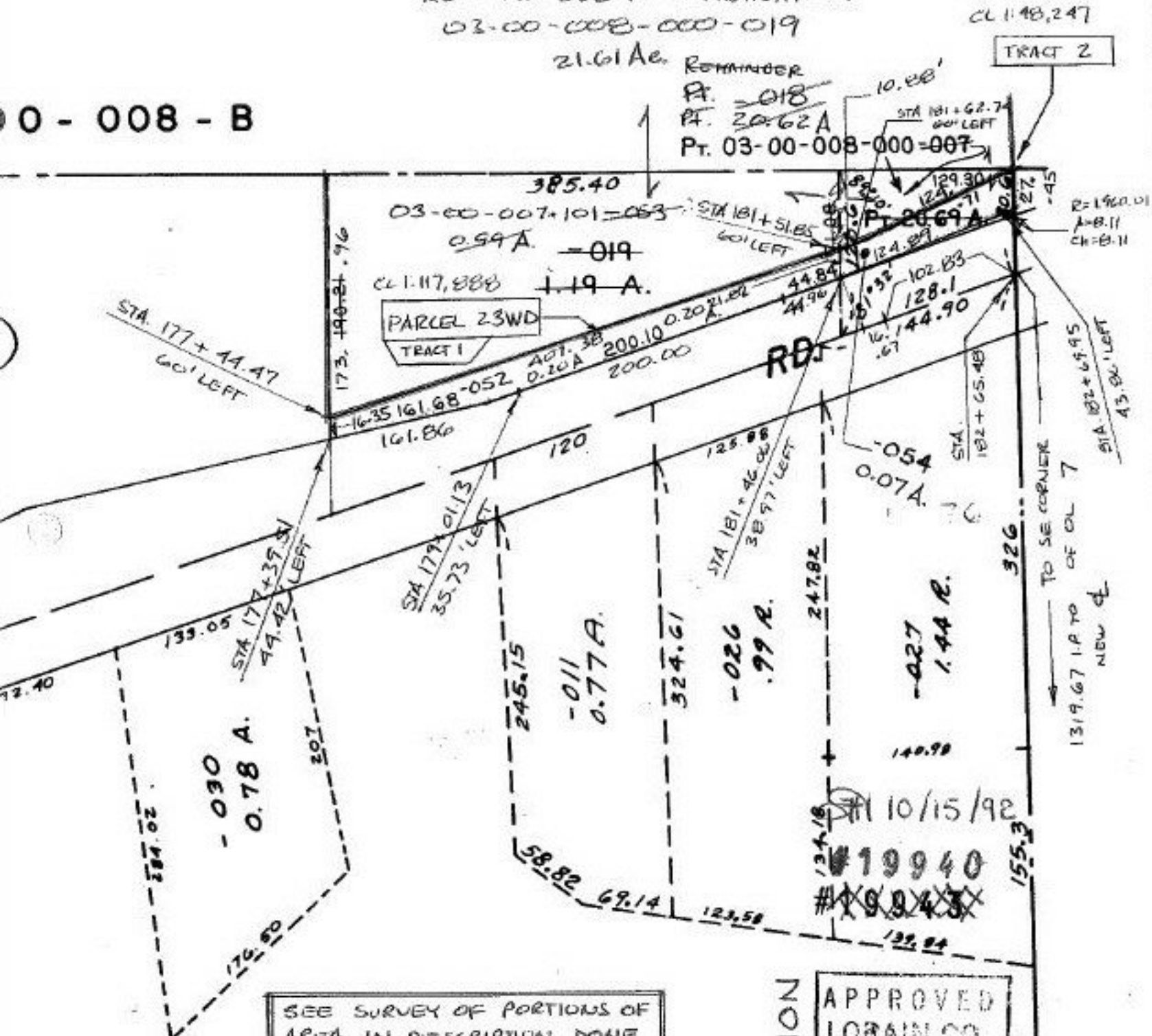
NEW NO. DUE TO COMBINATION  
03-00-008-000-019

21.61 Ac. REMAINDER  
Pt. 03-00-008-000-007

CL 1148,247

TRACT 2

0 - 008 - B



PARCEL 23WD  
TRACT 1

TO SE CORNER  
1319.67 I.P. TO OF CL 7  
NEW CL

SEE SURVEY OF PORTIONS OF  
AREA IN DESCRIPTION DONE  
BY R. SIMON FOR FUTURE  
SPLITTING OF FINBURA LAND.

COMBINATION  
APPROVED  
LORAIN CO.  
MAP DEPT.  
DATE 8/22/92  
PAGE 3-00-007-B  
BY T. McNeil  
19940  
8/27/92

1/2