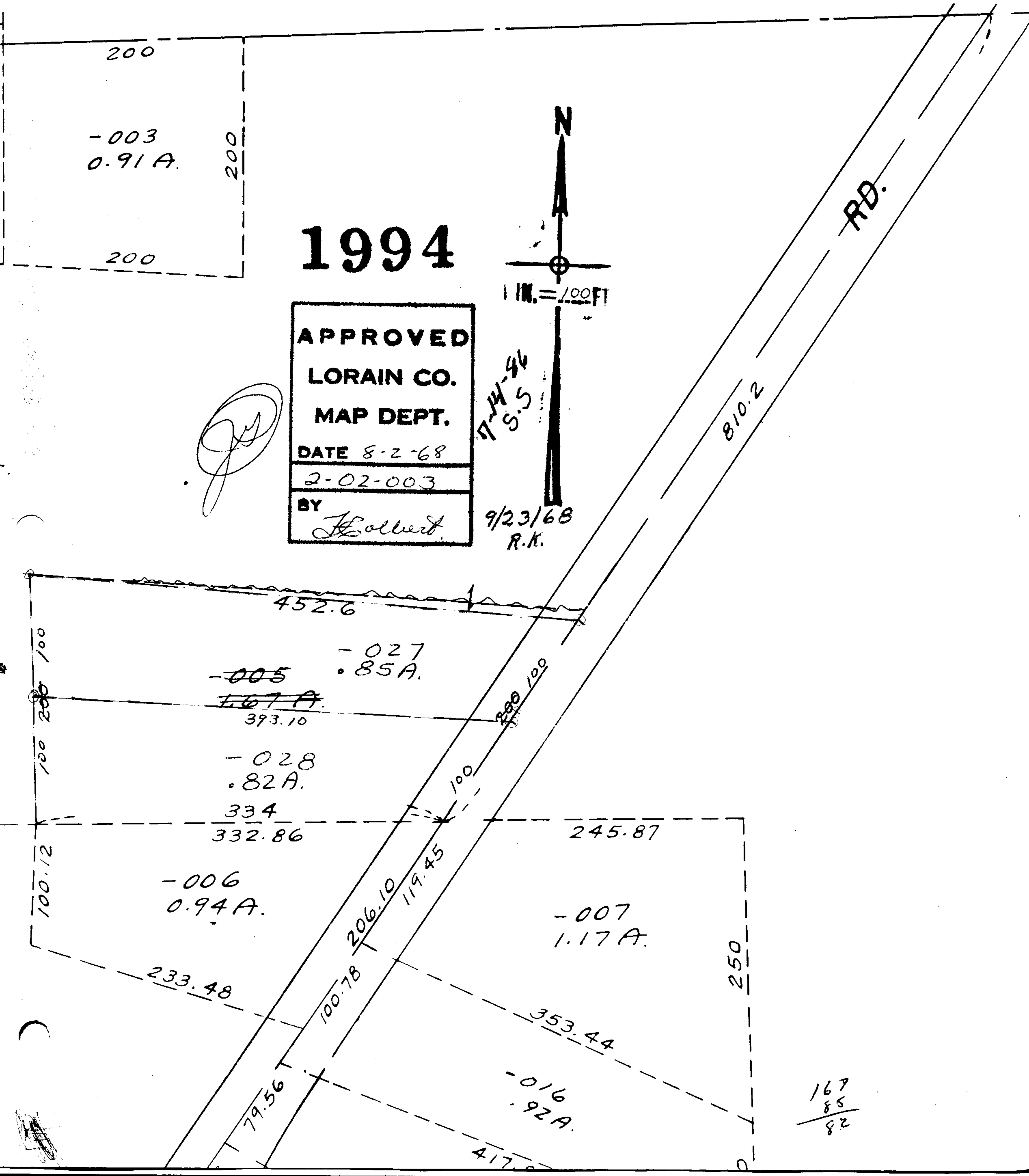


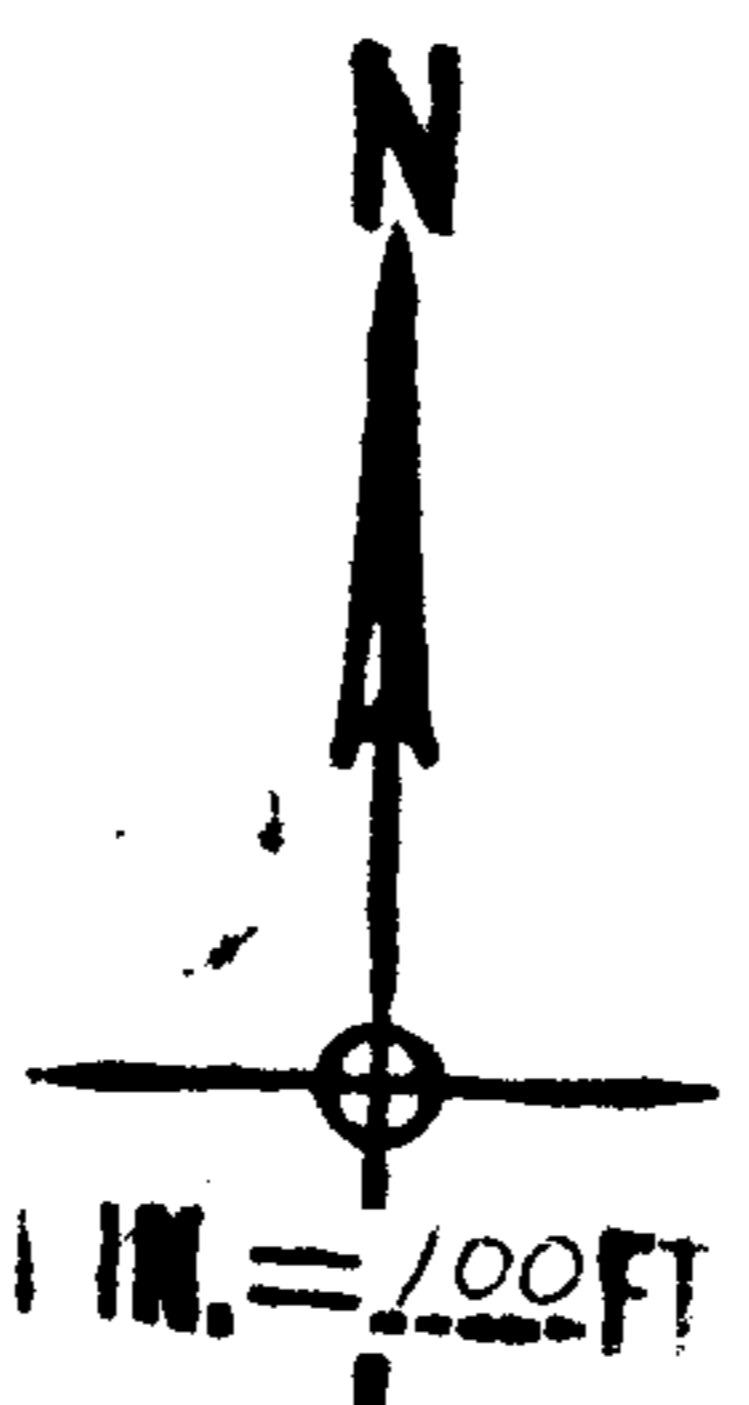
SEE 2-G



-003
0.91 A.

1994

APPROVED
LORAIN CO.
MAP DEPT.
 DATE 8-2-68
 2-02-003
 BY *Hollert*



T-14-96
S.S.

9/23/68
R.K.

RD.

810.2

452.6

-005
1.67 A.
393.10

-027
.85 A.

-028
.82 A.
334

332.86

245.87

-006
0.94 A.
233.48

206.10
119.45

-007
1.17 A.
353.44

-016
.92 A.
417.8

167
85
82