

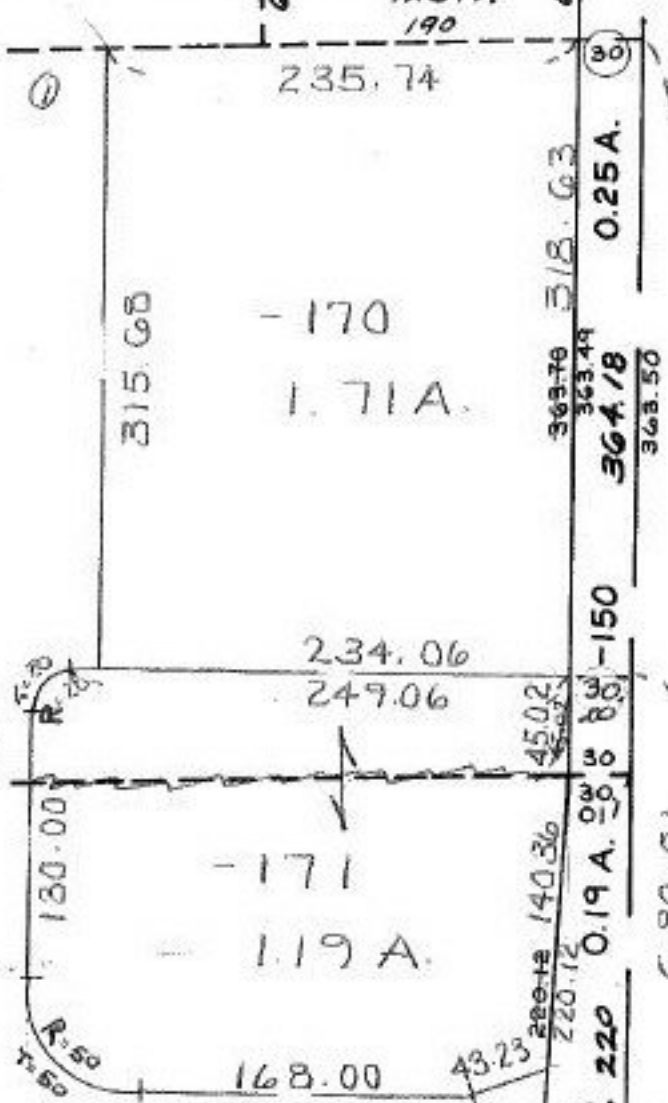
120

F = 20.00  
R = 20.00  
① A = 3142  
CH 28.28

R = 50.00 26.57 A  
F = 30.00 1.71 A  
CH = 70.71 24.86 A  
Acc. 0.29 A  
# 19933 P.2 24.57 A

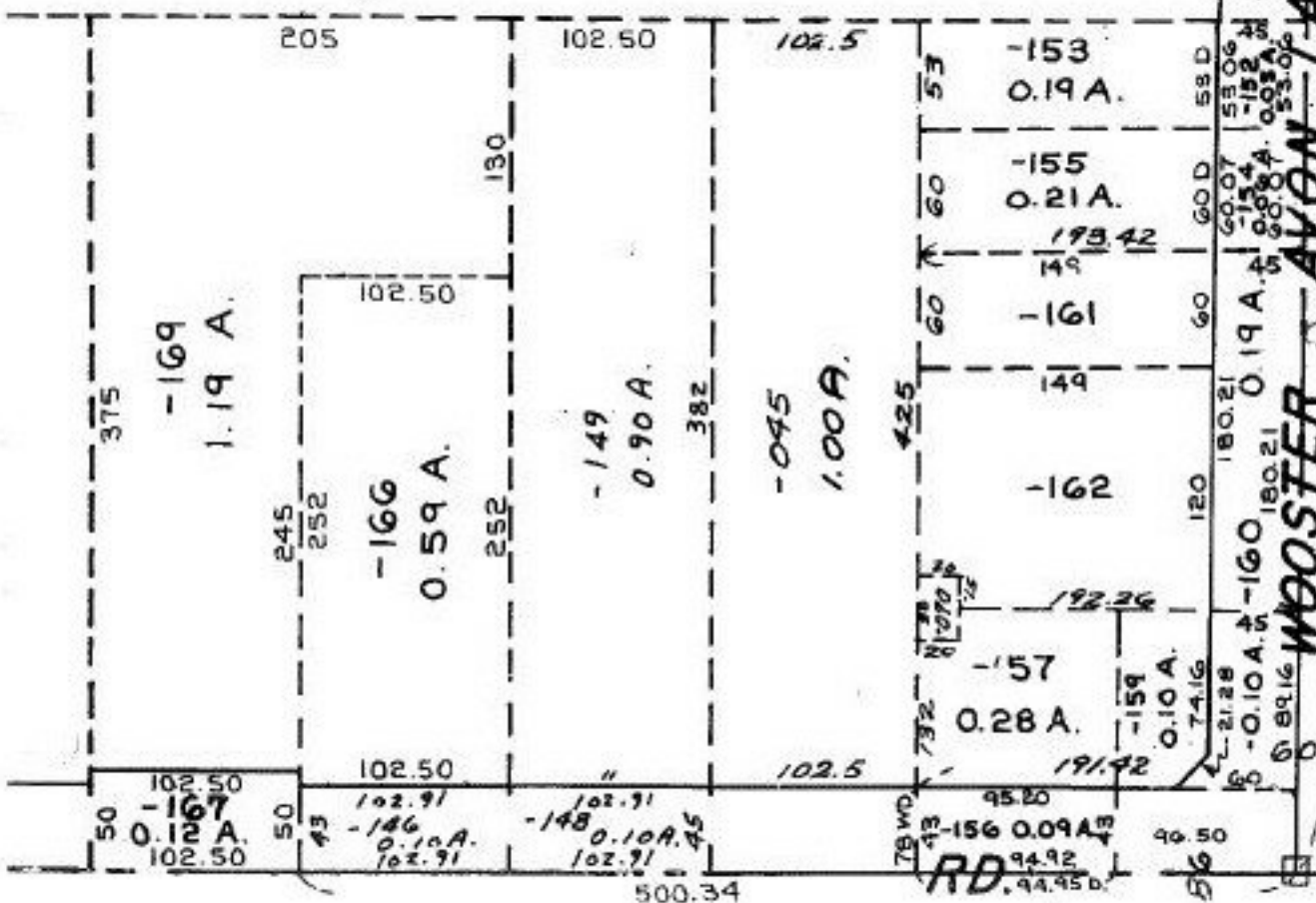
Pt. -15+  
Pt. 26.57 A.  
Pt. 172 3.69 A  
Pt. 24.57 A P.2 0.90 A  
2.79 A

# 19933  
-173 -164  
2.79 A -3.69 A



SEE 4.

1009.02  
04-00-018-128- PRIOR INST: 1425/50 O.R.28/255  
SURVEYED BY: KS ASSOC. C-1: 199,927 150,711



AVON LAKE  
WOOSTER

7/29/92  
19933

APPROVED  
LORAIN CO.  
MAP DEPT.  
DATE 6-4-92  
PAGE 4-00-018-J  
CAROLYN  
BY FRANCIS  
VOID AFTER # 19933