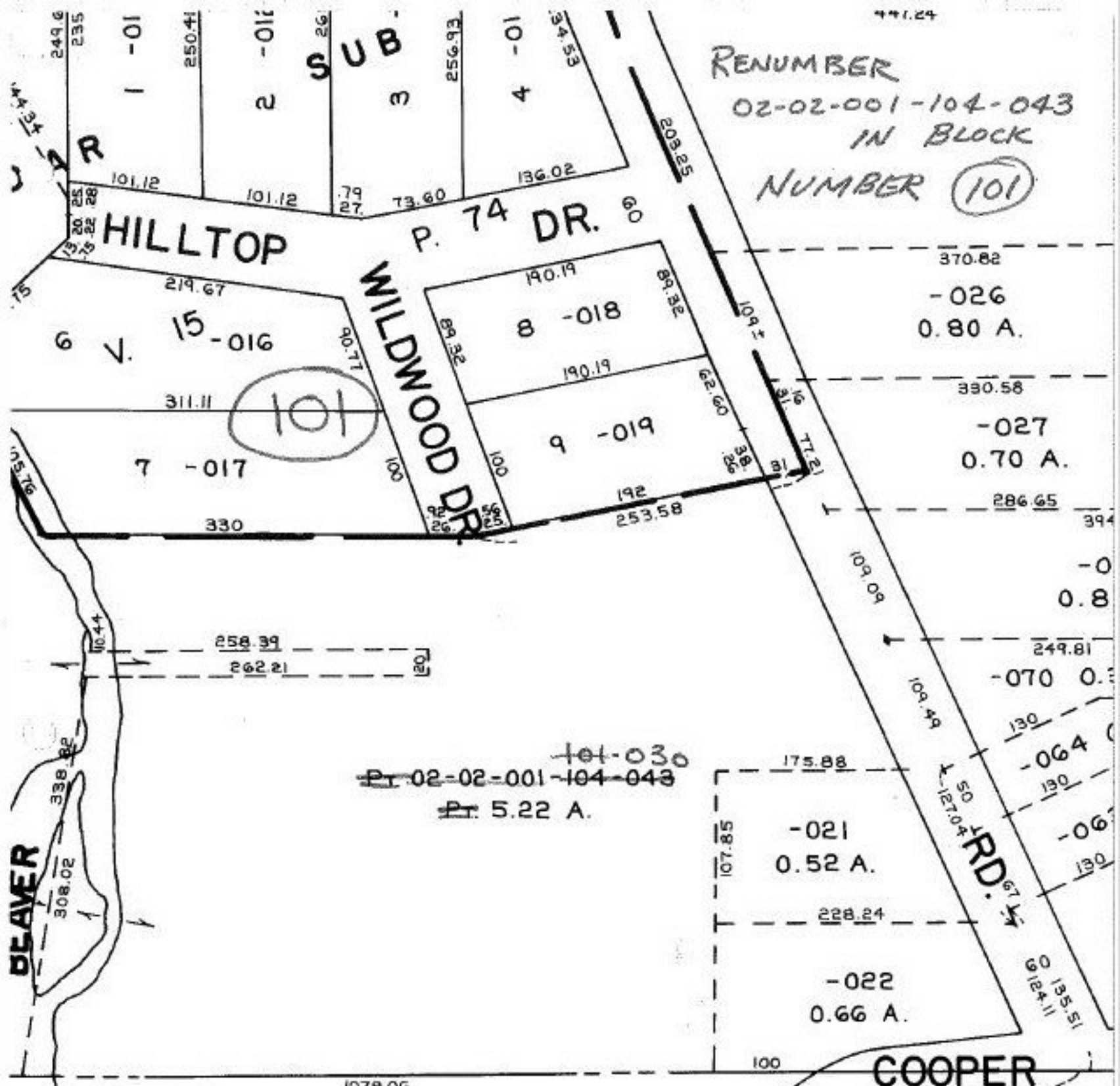


RENUMBER
02-02-001-104-043
IN BLOCK
NUMBER **(101)**



~~Pl. 02-02-001-104-043~~
~~104-030~~
Pl. 5.22 A.

175.88
-021
0.52 A.
228.24
-022
0.66 A.

SEE 5-00-021-A #19925-A

APPROVED LORAIN CO. MAP DEPT.	
DATE 5/13/92	
PAGE 2-02-001-A	
BY T. HOLLIS	
VOID AFTER	19925A