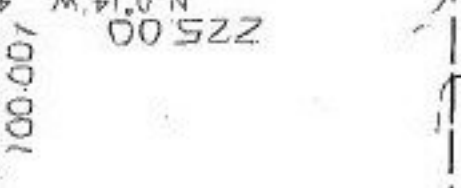
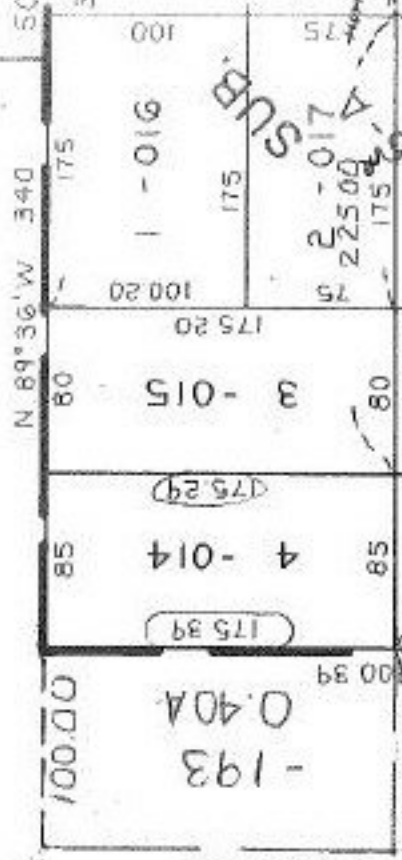


18.05 A  
17.65 A  
0.40 A

-184  
2.46 A

116.60  
906



PT. - 192  
 PT. - 013 - 013  
 PT. 17.29 A. 18.05 A  
 PT. 17.65 A

AC. CORL. KS. ASSOC.

1952.87  
 8/20/92  
**19920**

04-00-013-000- PRIOR INST: 1347/822  
 SURVEYED BY: KS ASSOC.  
 C-1: 282, 243

PT. 04-00-012-103-123  
 PT. 49.43 A.

APPROVED	VOID AFTER #
LORAIN CO.	19920
MAP DEPT.	
DATE 5-22-92	
PAGE 400-013-B	
BY CAROLYN	
CS-11111	

PT. - 023  
 PT. 15.00 A