

039 WAS RESULT OF WHIGWAY  
 SURVEY AS WAS SPILT OUT OF ORD  
 CL 1: 2,375,953(039) LINE CL 039  
 PRIOR DIST. 1142/305  
 REF. - DU 1239/552  
 CASE NO. 90CV 105089

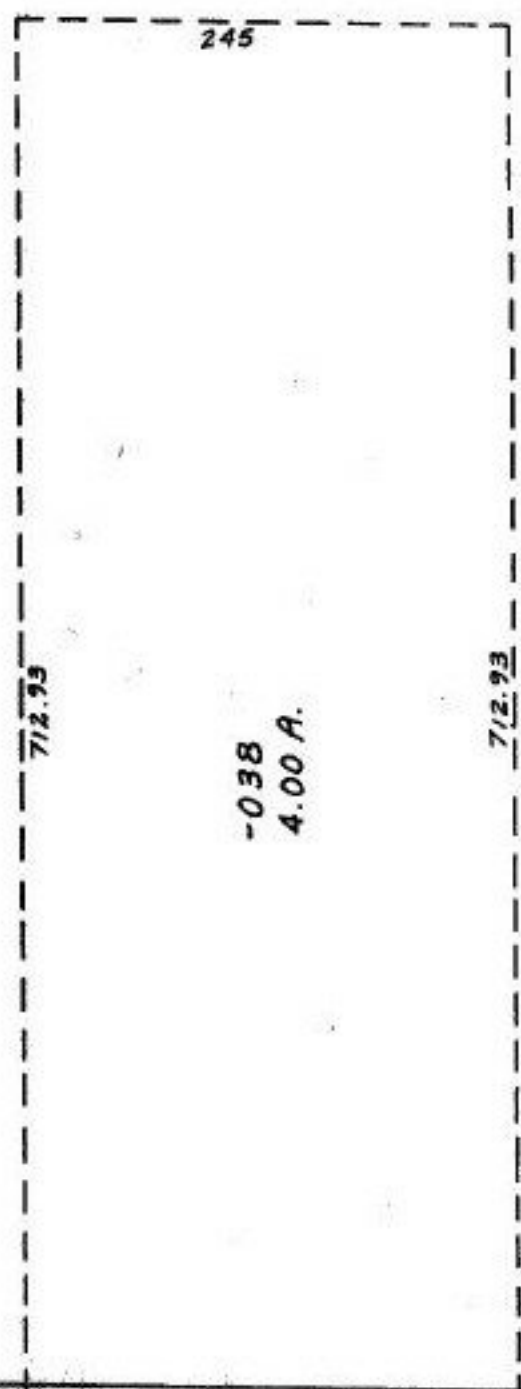
SEE

~~-039~~  
~~22.00 A.~~

22.49 Ac.

ACREAGE  
 CORRECTION

11-00-057.000-



-038  
 4.00 A.

PARCEL -042 TO BE DROPPED FROM DUPLICATE  
 PER COURT CASE NO. 90CV105089



1353.38

ACREAGE  
 CORRECTION  
 &  
 DROP  
 FROM  
 DUPLICATE  
 2/12/93  
 #19908-A

APPROVED LORAIN CO. MAP DEPT.	
DATE 1/20/93	
PAGE 11-00-057-A	
BY T. HOLLIS	
VOID AFTER	19908-A

245

183.44

61.56

245.00