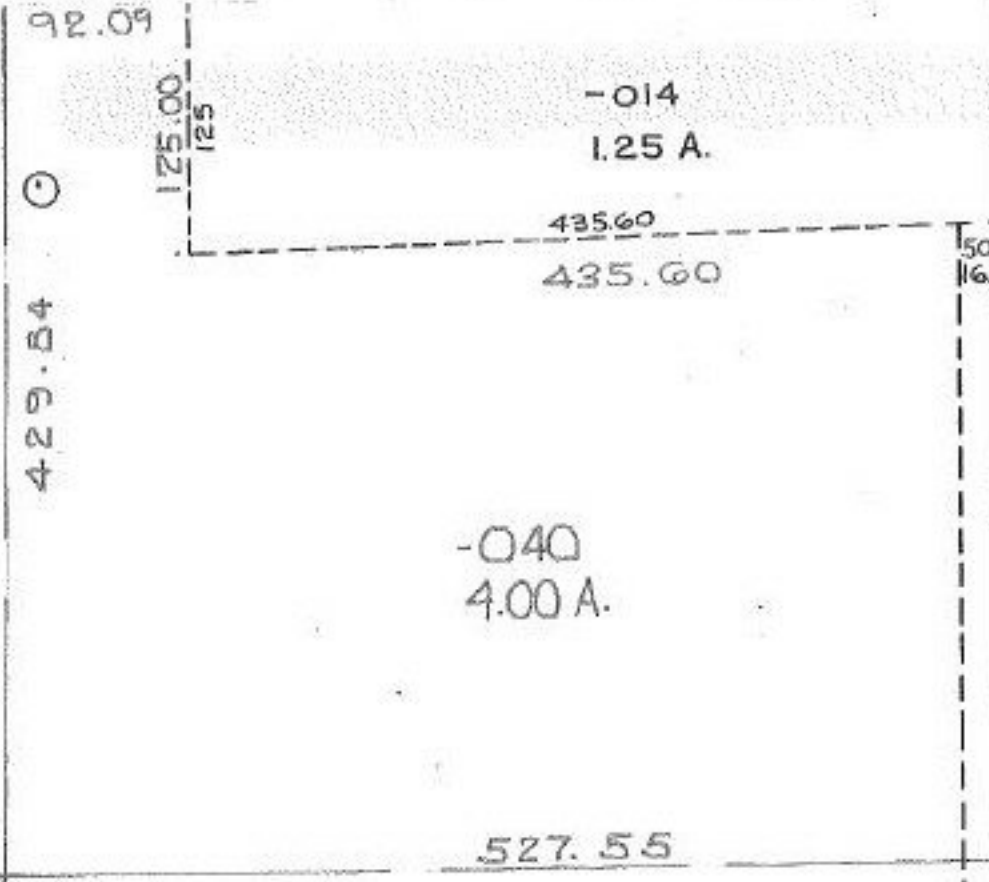


116



1111
 -043
 1111
~~-039~~
 Pt. -038
 Pt. 45.66 A.
 59.98 A.
 47.80 A.

597.58 ~~8/17/92~~
19905

APPROVED LORAIN CO. MAP DEPT.	
DATE 5-13-92	
PAGE 10-00-015-H	
BY CAROLYN RANCIS	
VOID REVER	# 19905

-041
4.10A.

593.79

-042
4.08A.

125
 125
 150
 6
 312.15
 60.01
 300.02
 300.02
 300.02
 SURVEYED BY: MEDINA-ELYRIA CO.
 10-00-015-116- PRIOR INST: O.R. 528/319
 C=1:LO:1:1000 C=1:INF C=1:INF

600.05

590.00