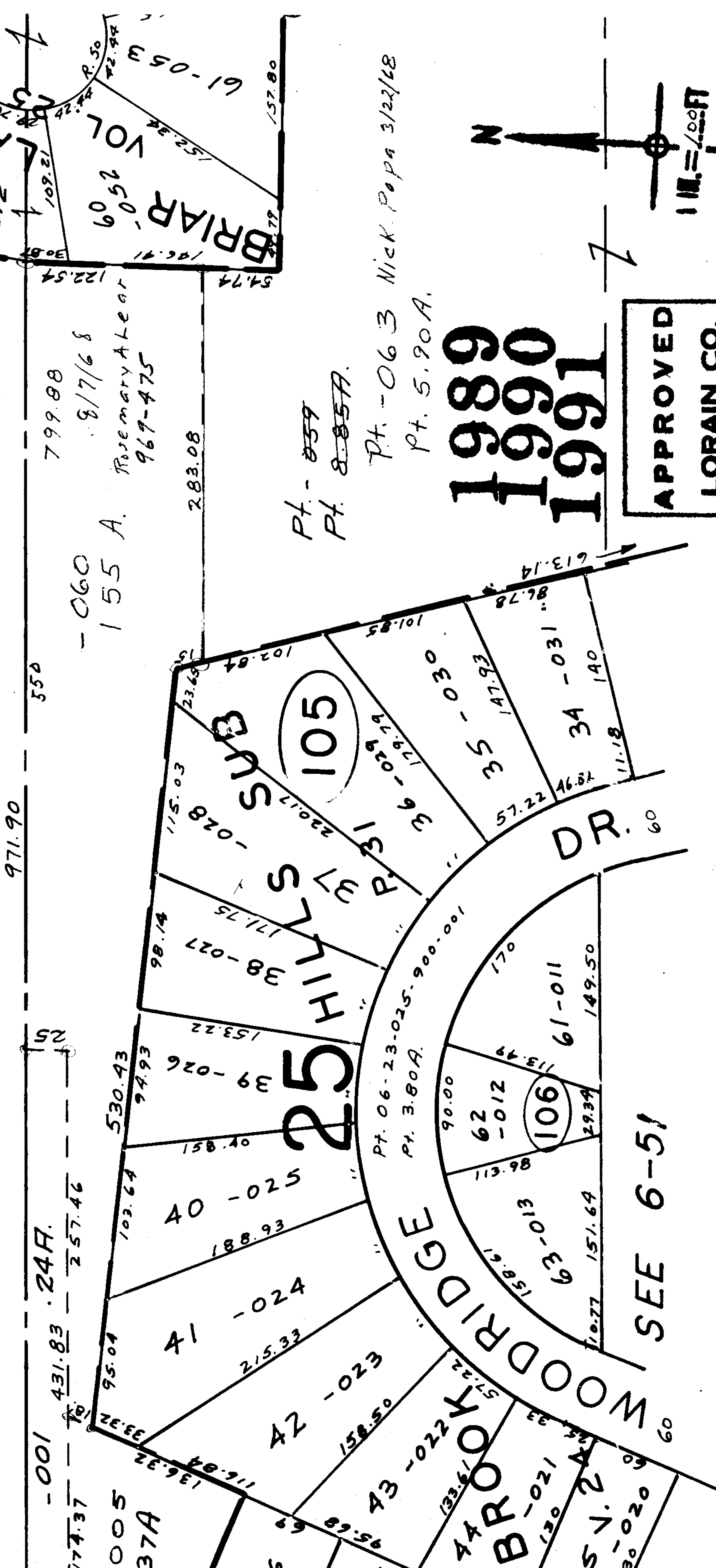


-010
4.38A.



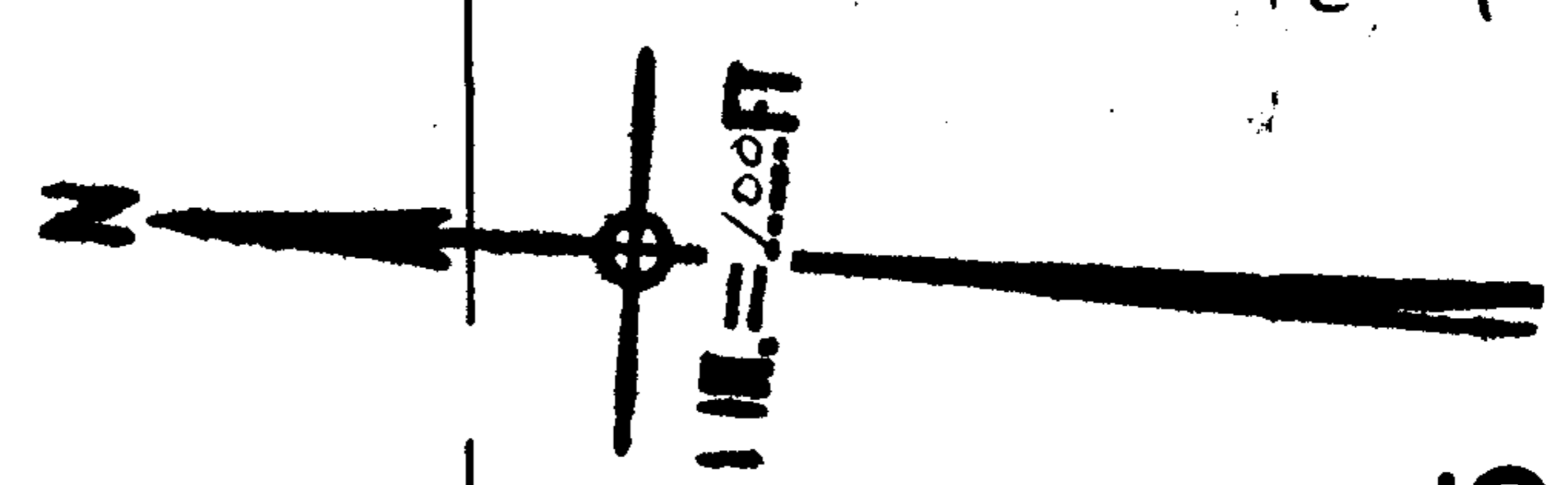
799.88
8/17/68
Rosemary A Lear
969-475

Pt. - ~~059~~
Pt. ~~8-85A~~

Pt. - 063 Nick. Papa 3/22/68
Pt. 5.90A.

1989
1991

| |
|------------------------|
| APPROVED |
| LORAIN CO. |
| MAP DEPT. |
| DATE 8-1-68 |
| 6-33 |
| BY <i>J. J. Jolley</i> |



12-1-87 *cb*

BRACE TRACT
CENTER PT. LOTS 22, 23, 24 & 25

SEE 6-51