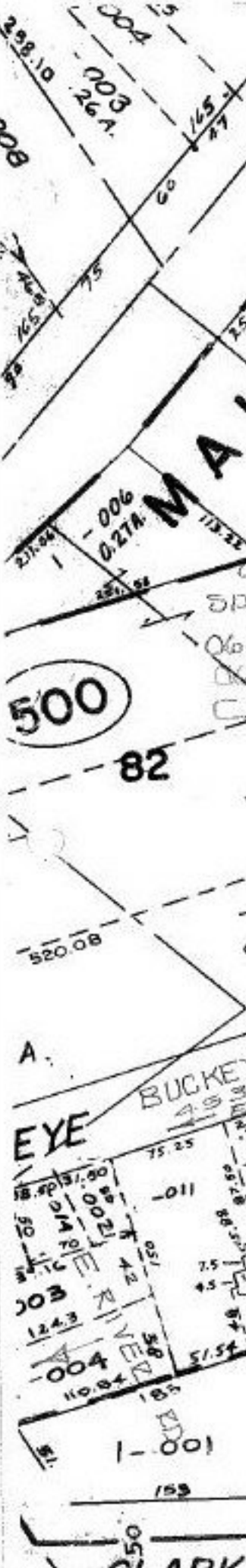


3 PT. -02
3 PT. 3.82A.
PGS. 13
66

MALCOLM

2 -003
1.14A.
VOL. 34

500



06-25-080-000-010
SPLIT INTO -016, 017
06-25-080-016-016 COMBINE WITH
06-25-083-000-003
COMBINATION P.P.NO. 06-25-083-000-010

06-25-080-000-06-25-083-000- PRIORITY INST: 654/94
SURVEYED BY: KS ASSOC. C=1: INF. 697/722

SPLIT & COMB.

6/15/92
19873

APPROVED
LORAIN CO.
MAP DEPT.
DATE 4-16-92
PAGE 6-103
BY CAROLYN FRANCIS
VOID AFTER # 19873

CLARK ST.

ST.