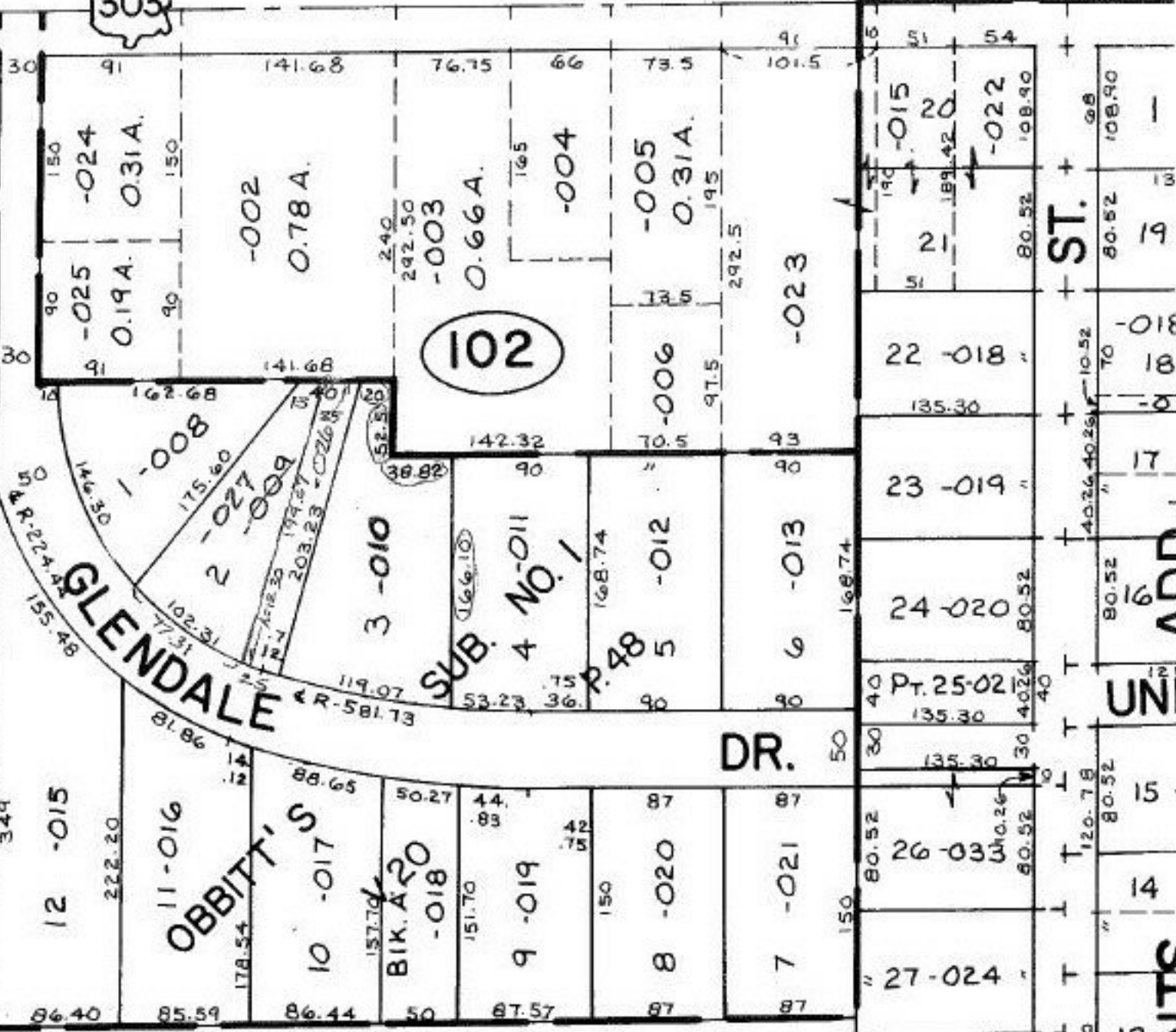


303

102

101



SEE SURVEY BY: K.S. ASSOCIATES  
 DAVID L. ELWELL  
 C.C. 1:175,272  
 Prior Instr. Ref. - DV 1396/56

5/4/92  
 #79841

APPROVED  
 LORAIN CO.  
 MAP DEPT.  
 DATE 3-31-92  
 PAGE 15-00-056-B  
 BY T. McMan  
 VOID AFTER 1984

ST.

ADD

UN

13 DANITE  
12 C

EASANT