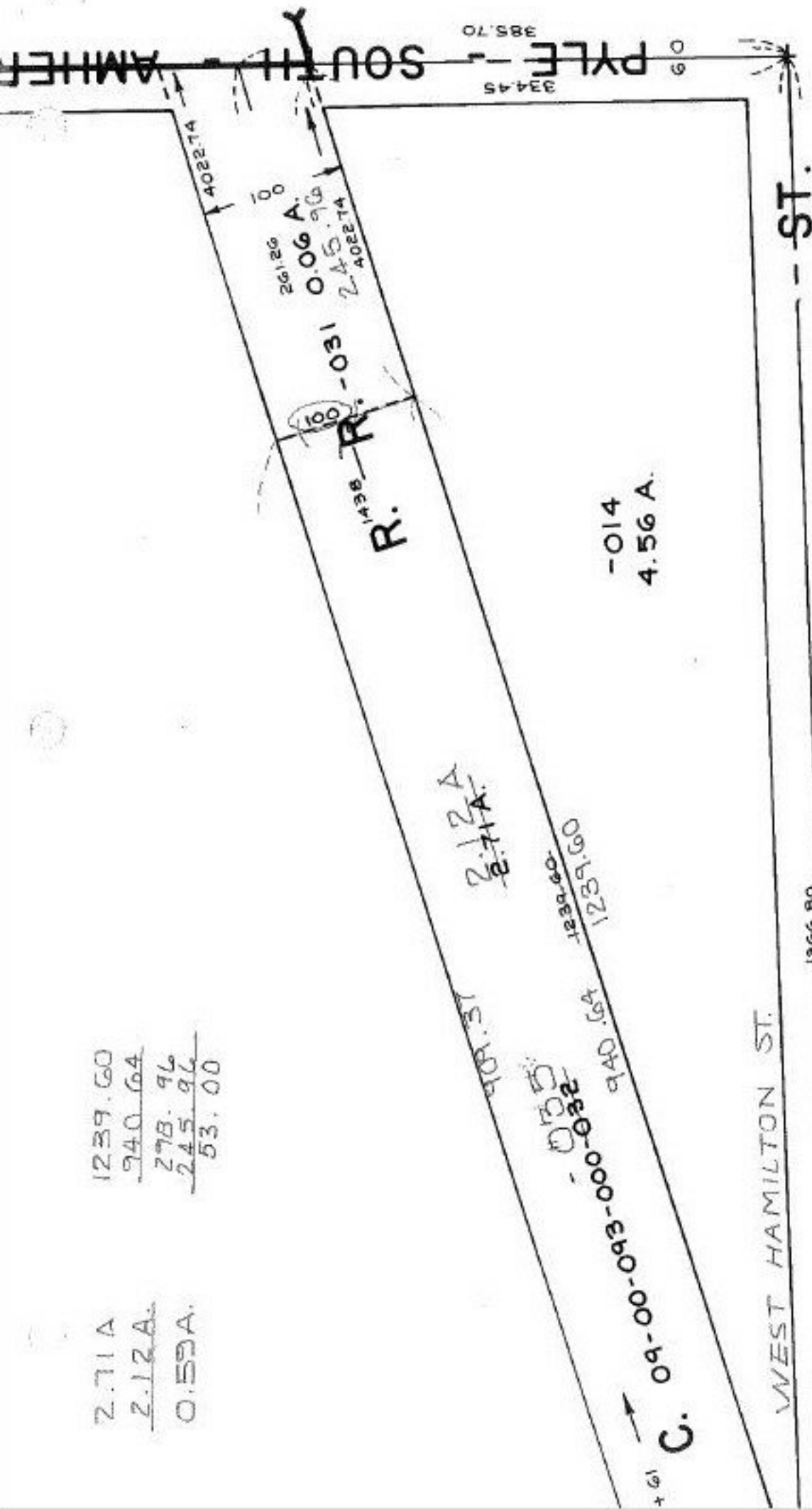


2.71A
 2.12A.
 0.55A.
 1239.60
 940.64
 278.96
 245.96
 53.00



1966.80
 1185.54
 7/9/92
 19816

SEE 9-00-103-B

APPROVED
LORAIN CO.
MAP DEPT.
DATE 3-11-92
BY CAROLYN FRANCIS
VOL. # 19816