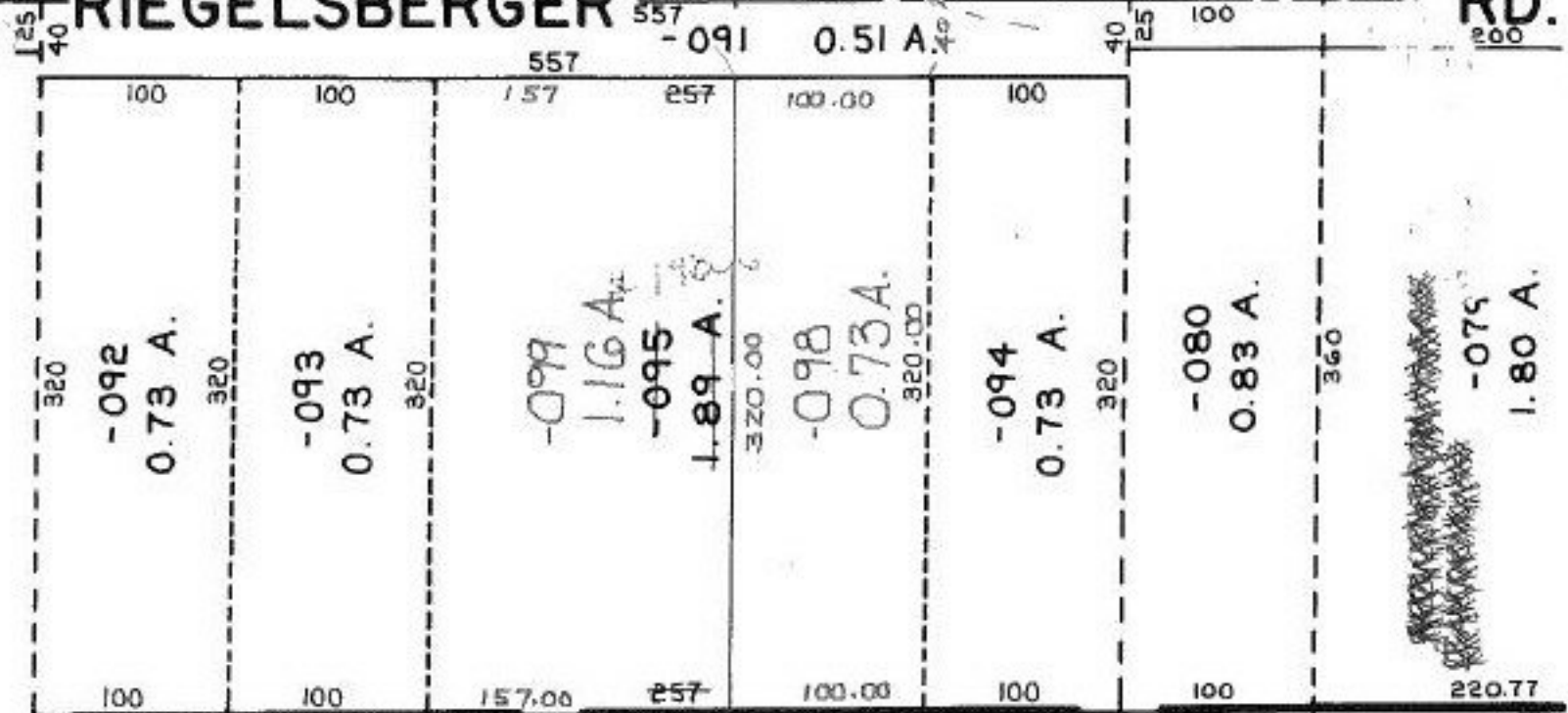


SEE 4-00-023-F

400.00 TO CL. INT. W. JAYCOX RD.

# RIEGELSBERGER



848.07

138

1.89 A  
 0.73 A  
 1.16 A

12 - 029

839.49

11 - 030

825.83

10 - 031

812.18

04-00-024-101- PRIOR INST. 566/301  
 SURVEYED BY: KS ASSOC. C=1: INF.

9 - 032

793.55

8 - 033

**SUBDIVISION**

8/20/92

19806

APPROVED	
LORAIN CO.	
MAP DEPT.	
DATE	3-3-92
PAGE	4-00-024-B
BY CAROLYN FRANCIS	
VOID AFTER #	19806