

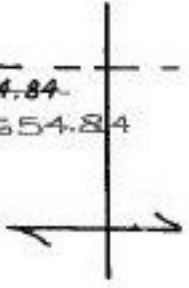
Pt. -031
Pt. 6.79A.



-190
Pt. -033
Pt. 10.21A.
10.01A.

19801

2684.84
2.654.84



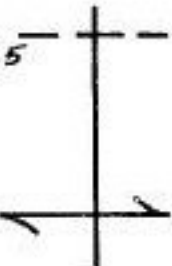
2632.2A
2687.24

Pt. -076
Pt. 8.22A.



2689.65

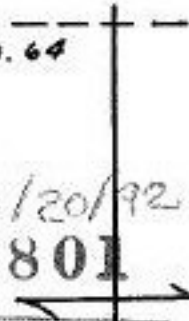
Pt. -147
Pt. 8.95A.



2690.64

Pt. -036
Pt. 20.00A.

8/20/92
19801



04-00-013-000- PRIOR INST: 713/387 1315/162

APPROVED
LORAIN CO.
MAP DEPT.
DATE 2-28-92
PAGE 4-00-013 E
BY CAROLYN
FRANCIS
VOR 2690.64
AFTER # 19801

013-E