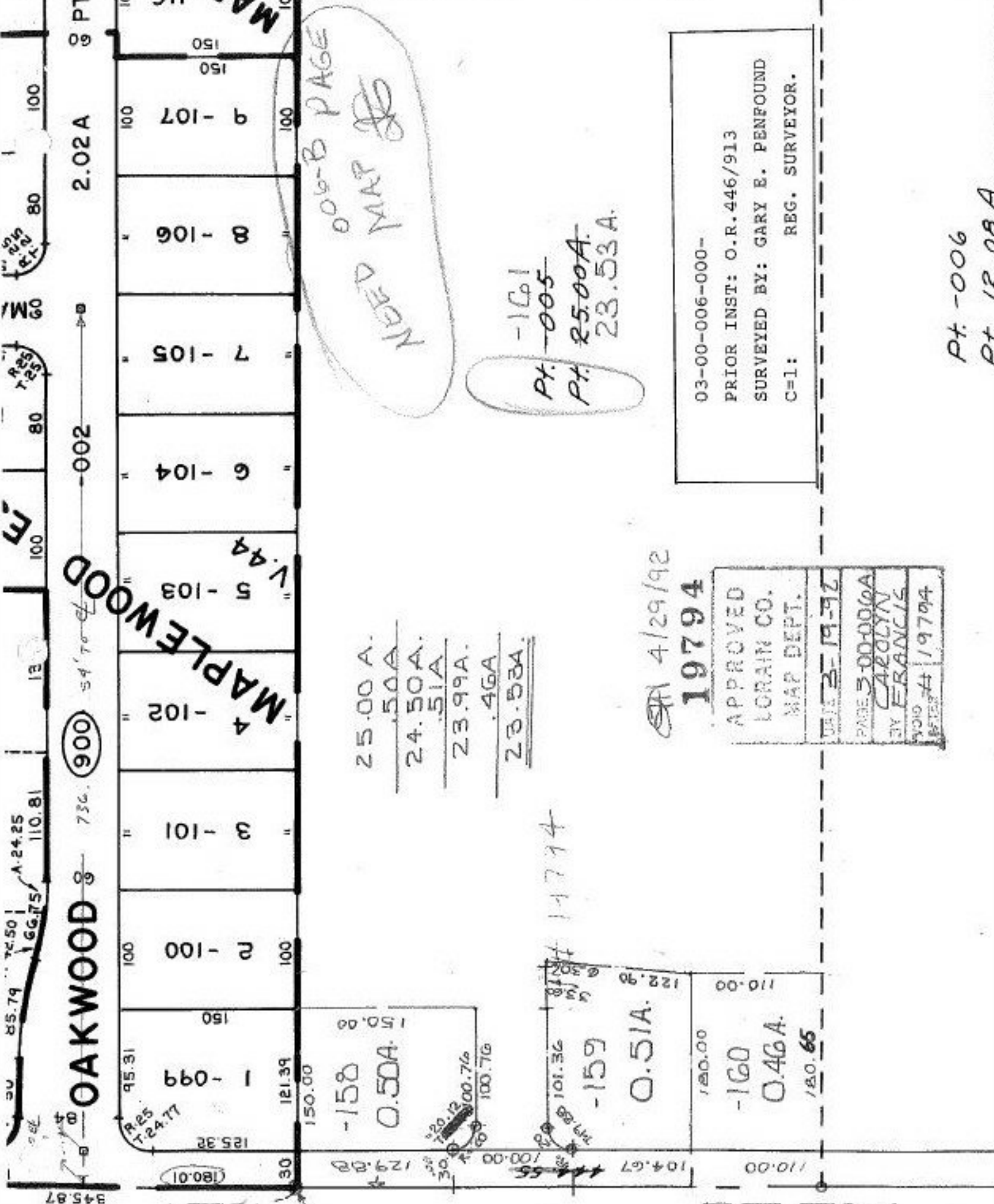


SEE 3-00-016-B

A B B B



25.00 A.  
5.0A  
 24.50A.  
5.1A  
 23.99A.  
.46A  
23.53A.

APR 4/29/92  
**19794**

APPROVED  
 LORAIN CO.  
 MAP DEPT.  
 DATE 3-19-92  
 PAGE 3-00-006A  
 BY CAROLYN  
 FRANCIS  
 WORK # 19794  
 PLS #

03-00-006-000-  
 PRIOR INST: O.R.446/913  
 SURVEYED BY: GARY E. PENFOUND  
 C-1: REG. SURVEYOR.

Pt. -006  
 Pt. 12.08A.