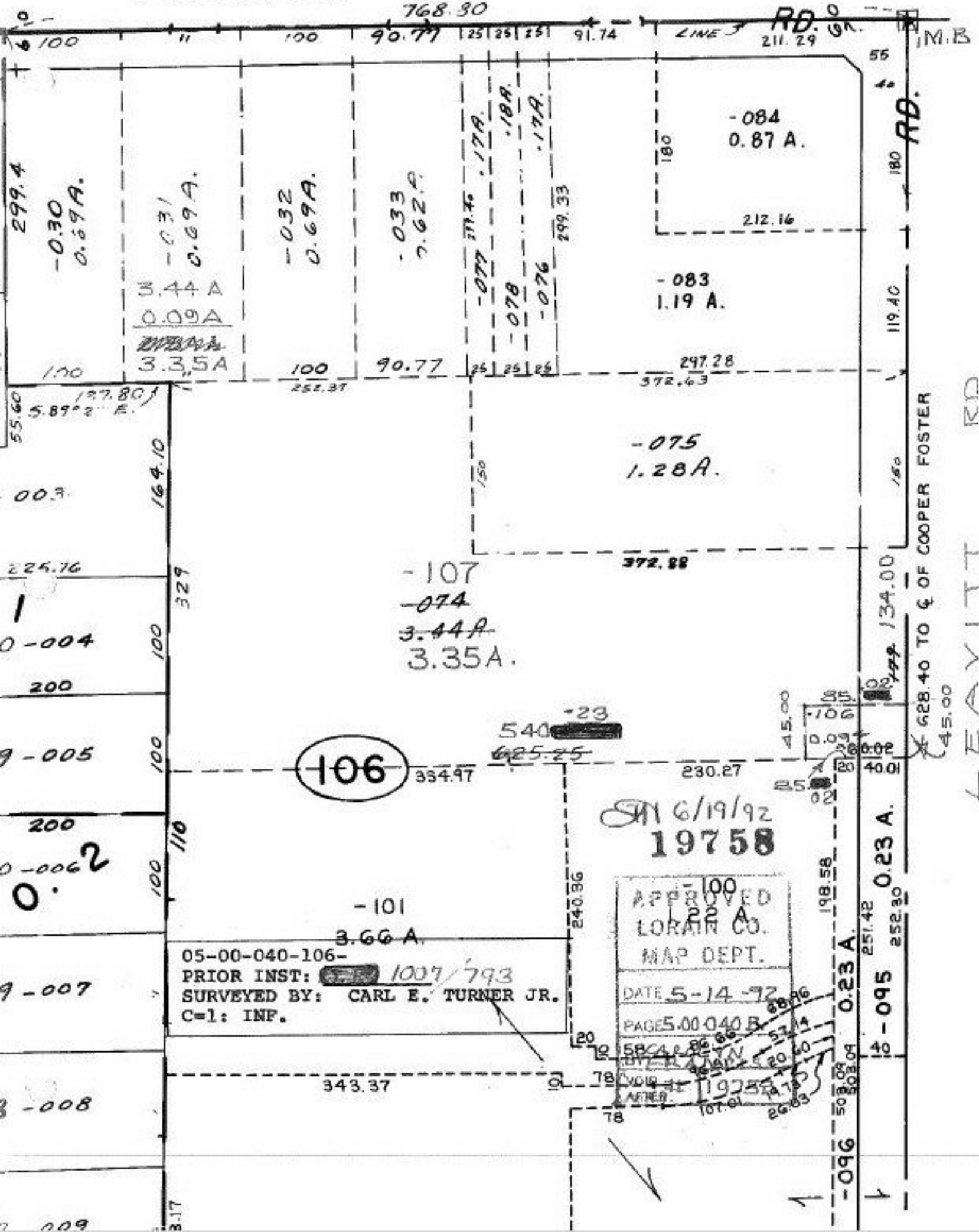


COOPER - FOSTER - PARK



768.30

RD. GR. 211.29

1 M.B.

299.4
-0.30
0.69 A.

-0.31
0.69 A.

-0.32
0.69 A.

-0.33
0.62 A.

-0.77
0.17 A.
-0.78
0.18 A.
-0.76
0.17 A.

-084
0.87 A.

-083
1.19 A.

-075
1.28 A.

-107
-074
3.44 A.
3.35 A.

106

-101
3.66 A.

05-00-040-106-
PRIOR INST: ~~1007~~ 1007/793
SURVEYED BY: CARL E. TURNER JR.
C=1: INF.

SM 6/19/92
19758

APPROVED
LORAIN CO.
MAP DEPT.

DATE 5-14-92

PAGE 5.00-040 B

VOID AFTER 19758

RD. GR. 211.29
RD.
628.40 TO E OF COOPER FOSTER
45.00

LEAVITT RD

55.60
137.80
5.89°2' E.

00.3

224.76

0-004

200

9-005

200

0-0062

9-007

8-008

2-009

164.10
329

100

100

100

110

100

100

100

3.17

252.37

90.77

25 25 25

297.28
372.63

372.88

334.97

540
625.25

230.27

240.96

343.37

20

78

78

45.00

85

02

198.58

251.42

252.30

509.04

503.04

134.00

100

100

100

100

100

100

100

100

100

100

0.23 A.

0.23 A.

0.23 A.

0.23 A.

0.23 A.

0.23 A.

0.23 A.