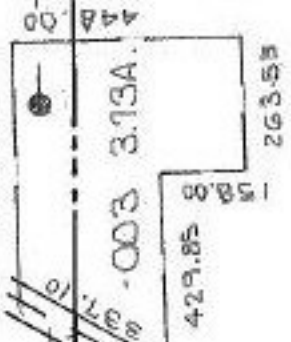


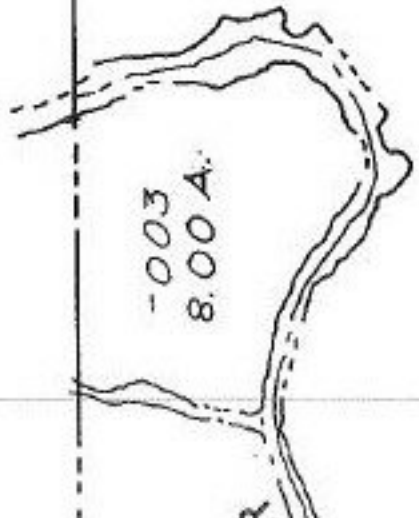
521.53
117.11
15-00-091-000-019 1.27A



6

42

ST.



-003
8.00 A.

-004
-001
119.00 A.
115.27 A.

15-00-091-000-005 30.00
SPLIT 1.27 A
28.73 A

19-06-042-000-001 119.00 A
SPLIT 3.73 A
115.27 A

DEED 1.275 0.4 91 1.27 A
3.725 0.4 42 3.73 A
5.000 A 5.000 A

15-00-091-000- 19-06-042-000- PRIORITY: 1271/522
SURVEYED BY: JOHN POZYMAK REG. SURVEYOR C-1339, 344

VERMONT

SN 6/2/92
19750

APPROVED
LORAIN CO.
MAP DEPT.

DATE 1-24-92
PAGE 19-D
BY CAROLYN
E. FRANCIS

350.80
728 A.

T

5
0A.
41

43

-001
116.50 A.