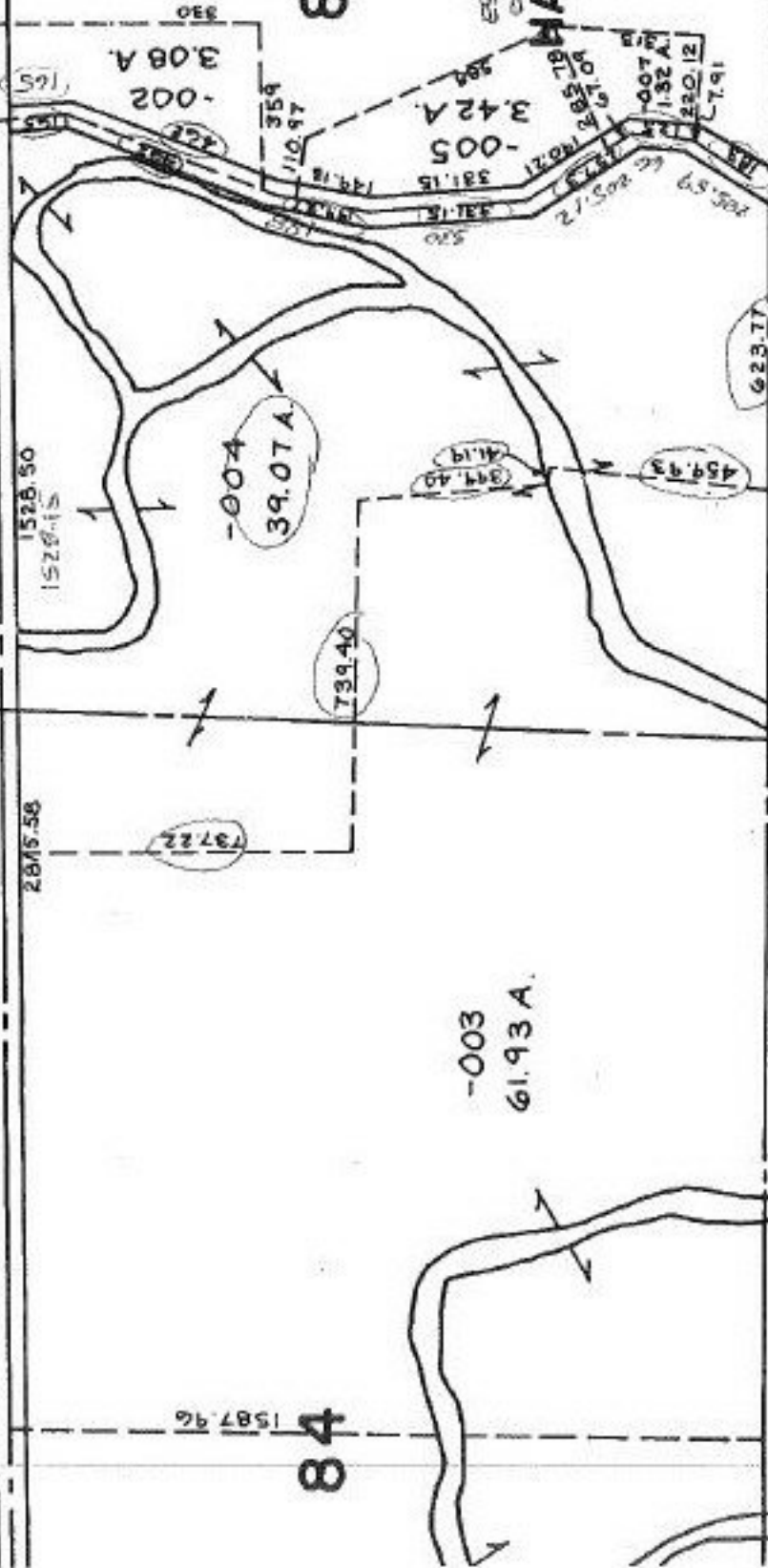


SEE 14-C

RD.

60

303



83

-008
44.18A.

84

-003
61.93A.

-003
4.00A.

-004
15.95A.

ESTABLISHED NEW 60' R/W - 30'
CHUCK SIPS OF 45 AS DRAWN

HAWLEY RD. DEDICAT

V.28 P.1

APR 14 1992

#19740-A

APPROVED	DATE 1-13-92
LCRAIN CO.	PAGE 14-G
MAP DEPT.	BY T. McVain
	19740-A

ED
CHECK

-002
67.00A

97

-001
38.00A.

4.