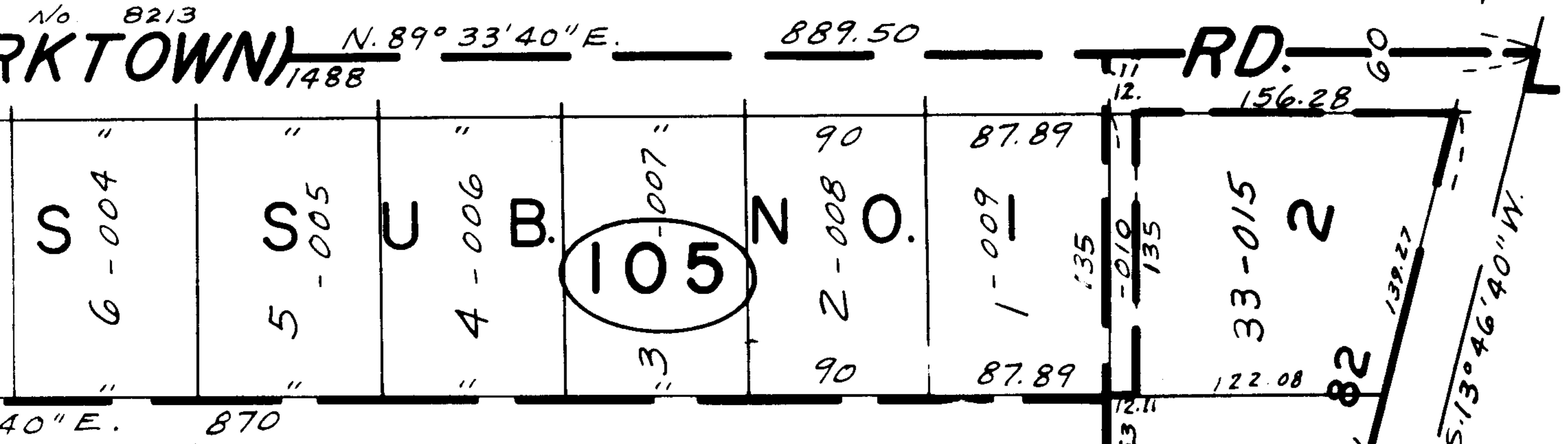
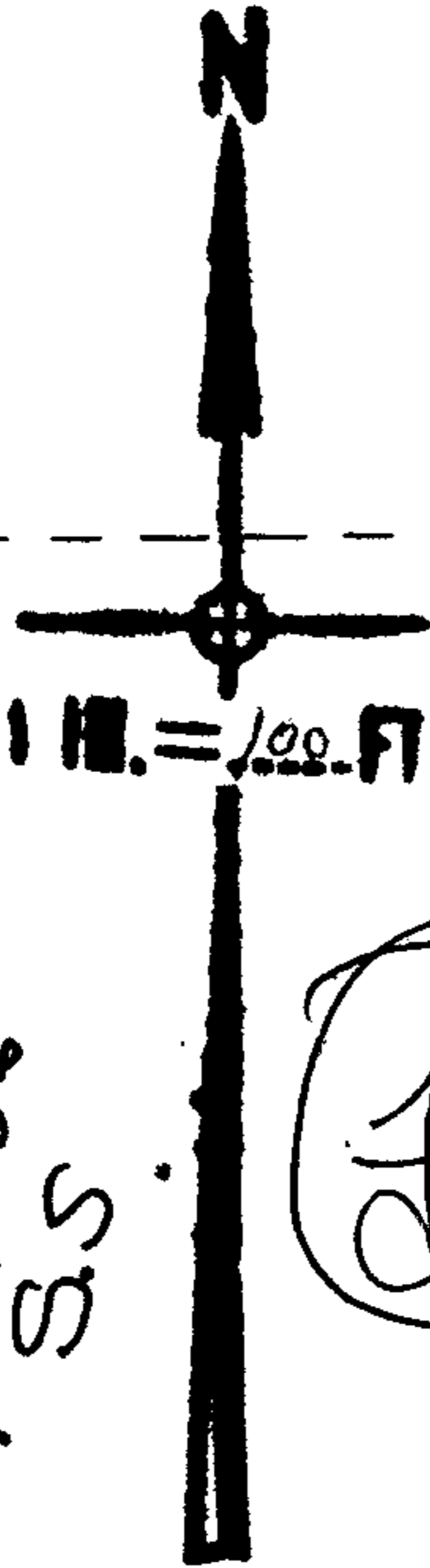


-005
5.09 A.



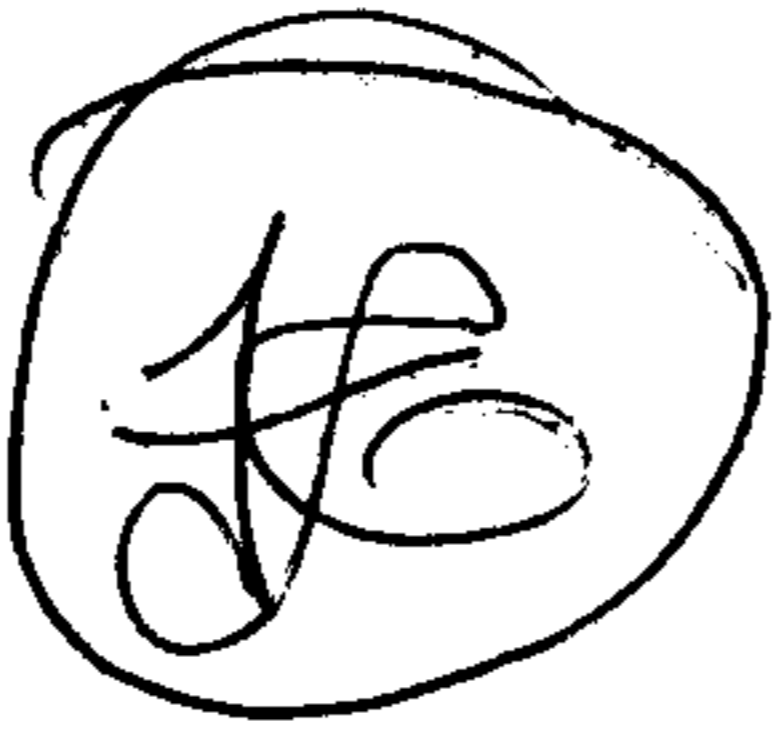
-006
4.79 A.

1972



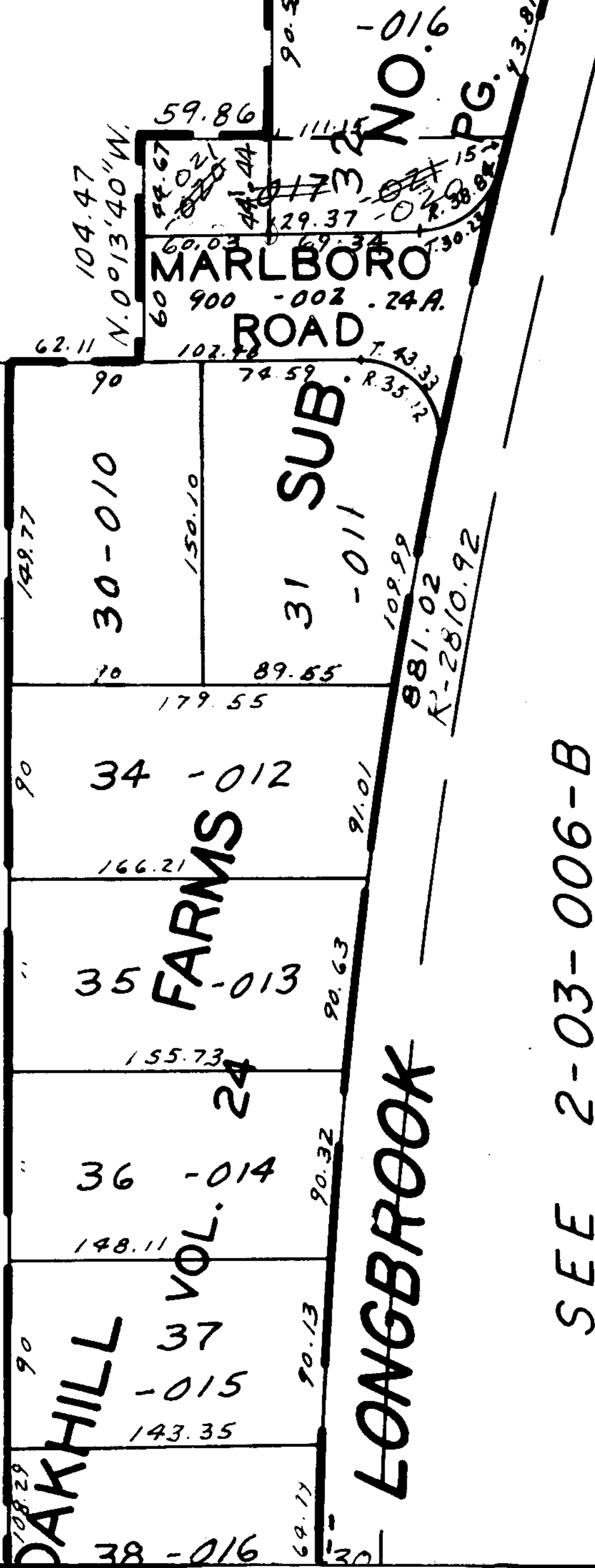
APPROVED
LORAIN CO.
MAP DEPT.
 DATE 7-23-68
 2-03-006-A
 BY *Callbert*

7-14-86
S.S.



4573
Done
R.K.

R.K.



7-23-68 #30

SEE 2-03-006-B

232.11