

BAIRD RD.

332

51.76 A.
- 2.00 A.
49.76 A.

- 021
49.76 A.

~~- 019~~
51.76 A.

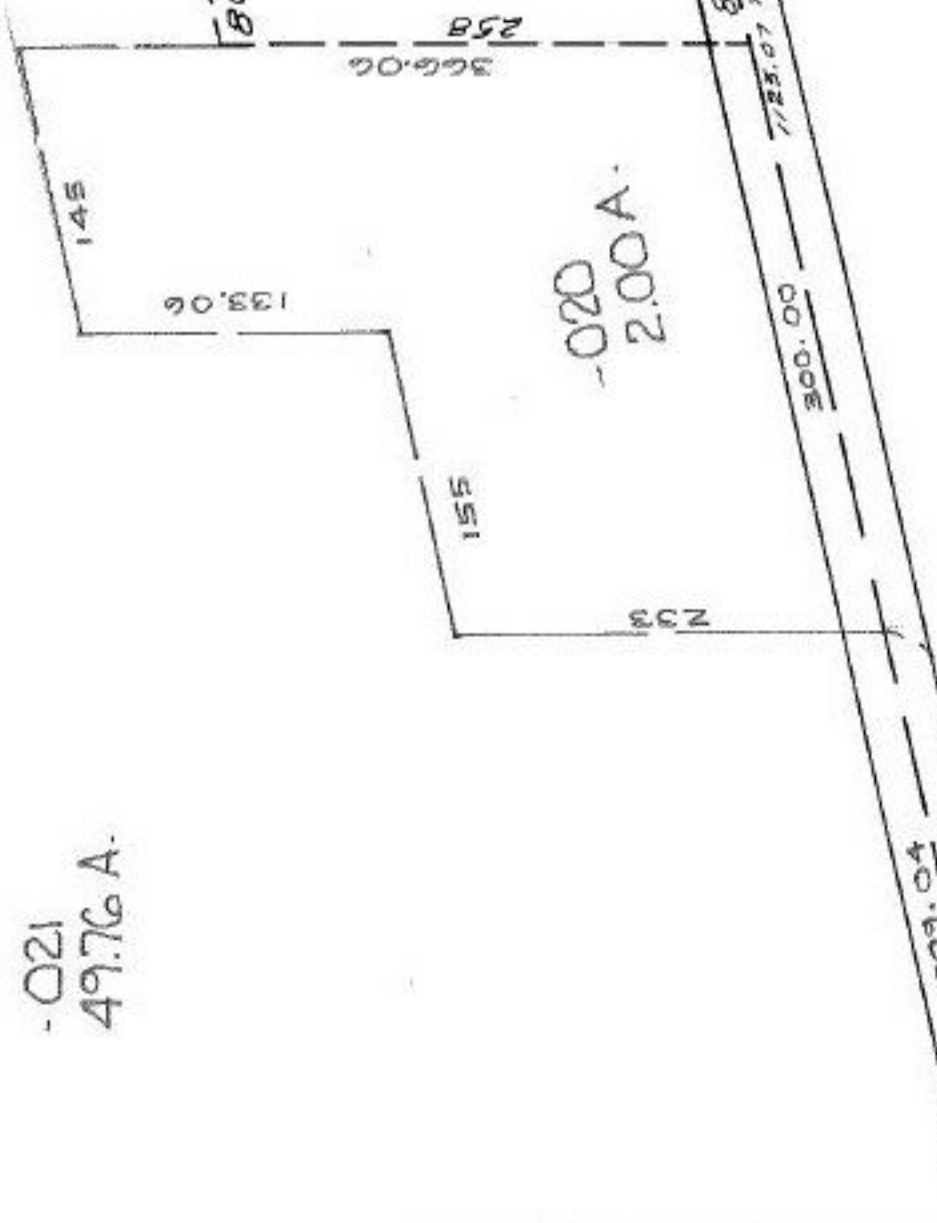
313
293.87

- 018
APR 14 1932 2.24 A.

19703

APPROVED
LORAIN CO.
MAP DEPT.

DATE 12-12-91
PAGE 13-11-017
CAROLYN
FRANCIS
VOID
AFTER # 19703



HAIGH
N. Y. C.

13-11-017-000- PRIOR INST. 1171/627
SURVEYED BY: ARNOLD KOEPP REG. SURV.
C=1:833,770

50
106

86.39
258
- 016
.50 Ac.
258
86.39
1015