

3-H

SEE

5358 34

-090  
181.52 A.

DESCRIPTION  
 WAS PART OF SPLIT #18710  
 WENT INTO -08B 1.19A 2739  
 -08B WAS COMBINED WITH -08A  
 P.P.NO. -08A  
 -08A WAS COMBINED WITH -061  
 P.P. NO. -090  
 Pt. OF 04-00-005-000-090  
 181.52A

THE PARCEL IN DV 1135/666 WAS  
 PART OF A COMBINATION TO CREATE  
 -090 181.52 A., 2/28/91, #19271-JA

The Village of  
 Avon To  
 Ford Motor & Dr. 1135/666

491.50  
 1.31A  
 1429.32

3506  
 DV. 1135/666

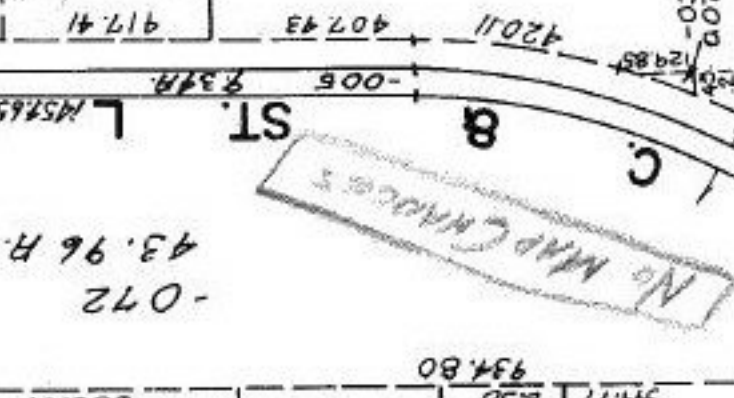
-055  
 .31A

-015  
 10.00A.

12960 662.90  
 522.45  
 522.70  
 -017  
 4.82A.  
 529.68  
 -049  
 3.02A.  
 525.67

-054  
 12.82 A.

-072  
 43.96 H.



1/17/92

04-00-005-000  
 IDEED CHECK  
 19702A

APPROVED  
 LORAIN CO.  
 MAP DEPT.  
 DATE 12-18-91  
 PAGE 4-A  
 BY CAROLYN FRANZ  
 VOID #19702A

Pt - 071

DEFERRED CHECK SEE 4-E