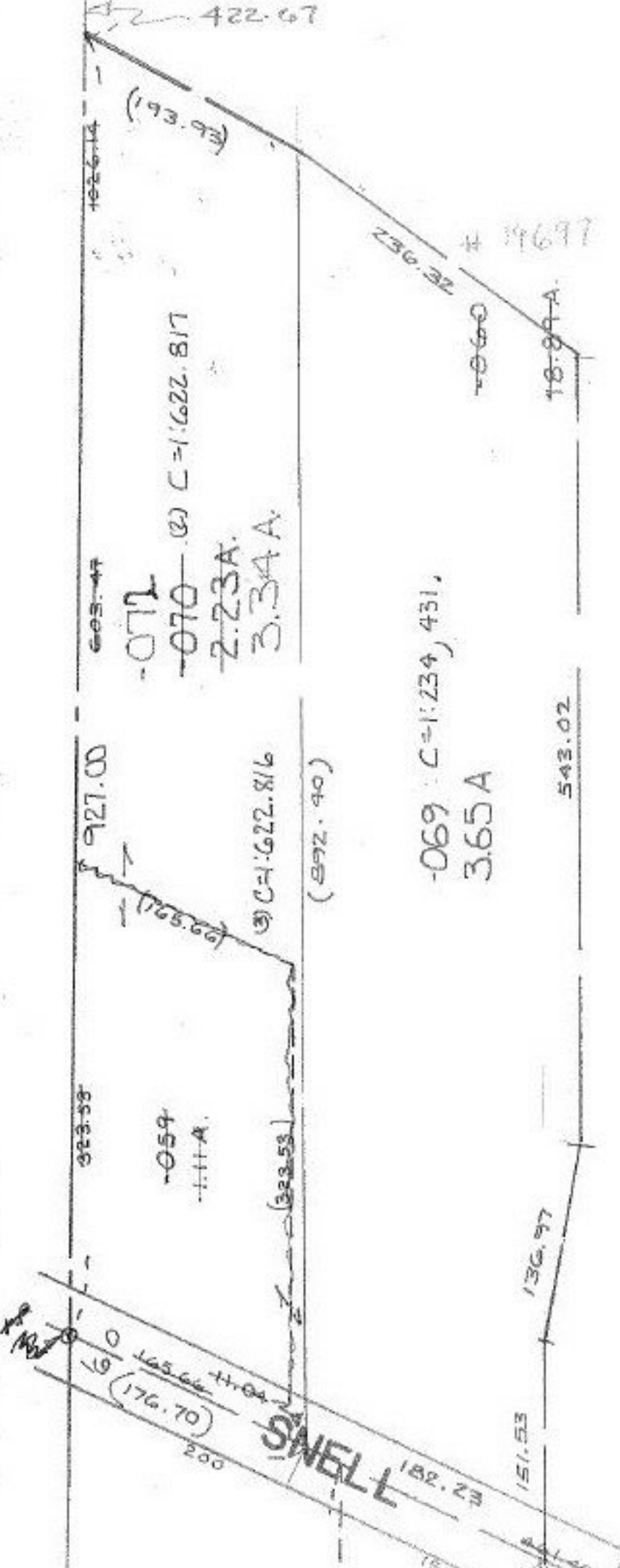


SEE 12-D



-059 1.11A  
 -070 2.23A  
 -----  
 3.34A

1473.95

-063  
 6.86 A

12-00-003-000- PRIOR INST. 999/29  
 SURVEYED BY: JOHN R. HOY REG. SURVEYOR  
 SPLIT 1882/152

9/2/92  
 19697

APPROVED  
 LORAIN CO.  
 MAP DEPT.  
 DATE 12-10-91  
 PAGE 12-00-003-A  
 BY CAROLYN FRANCIS  
 VOID AFTER #19697

SPLIT AND COMBINATION