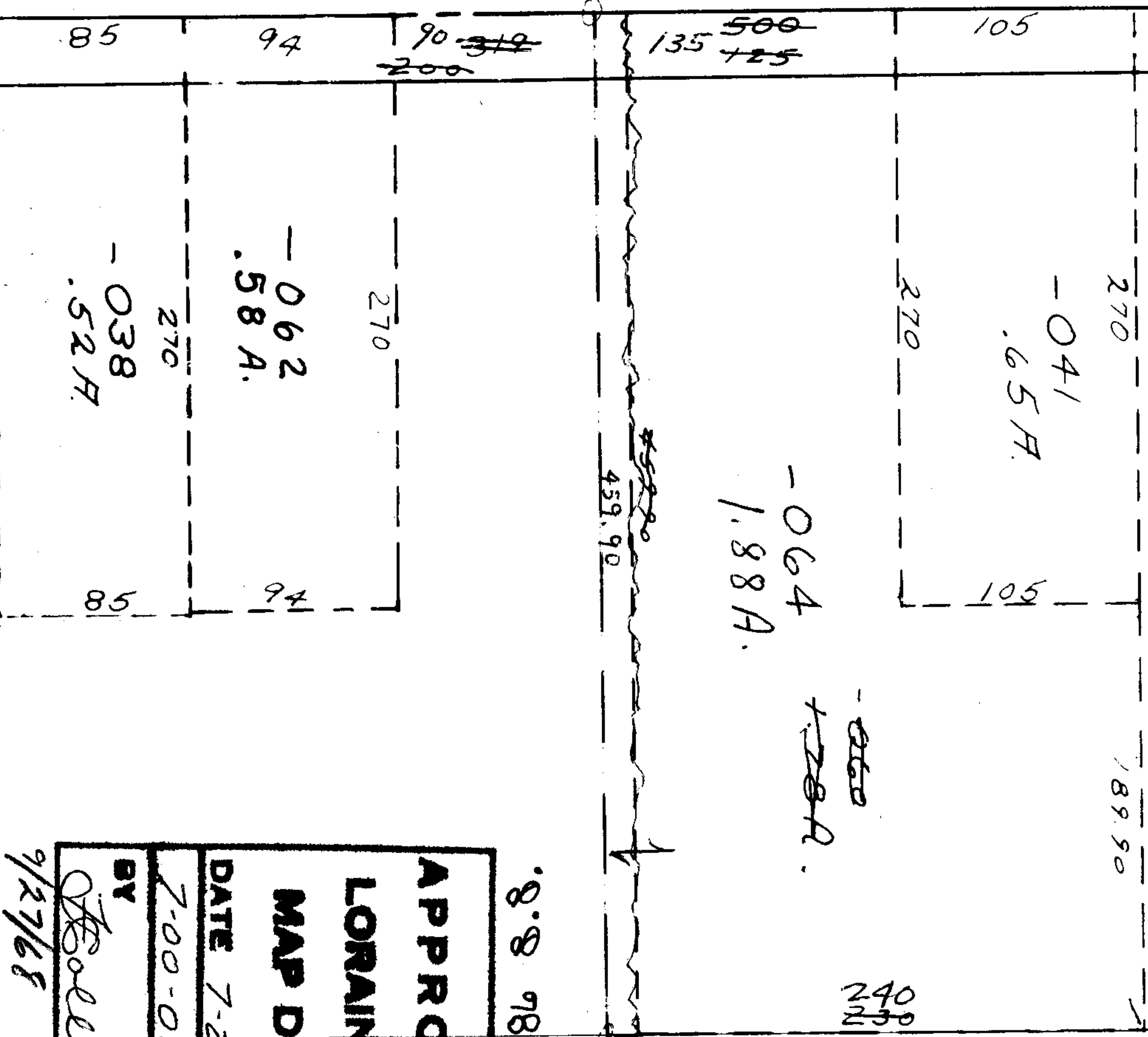
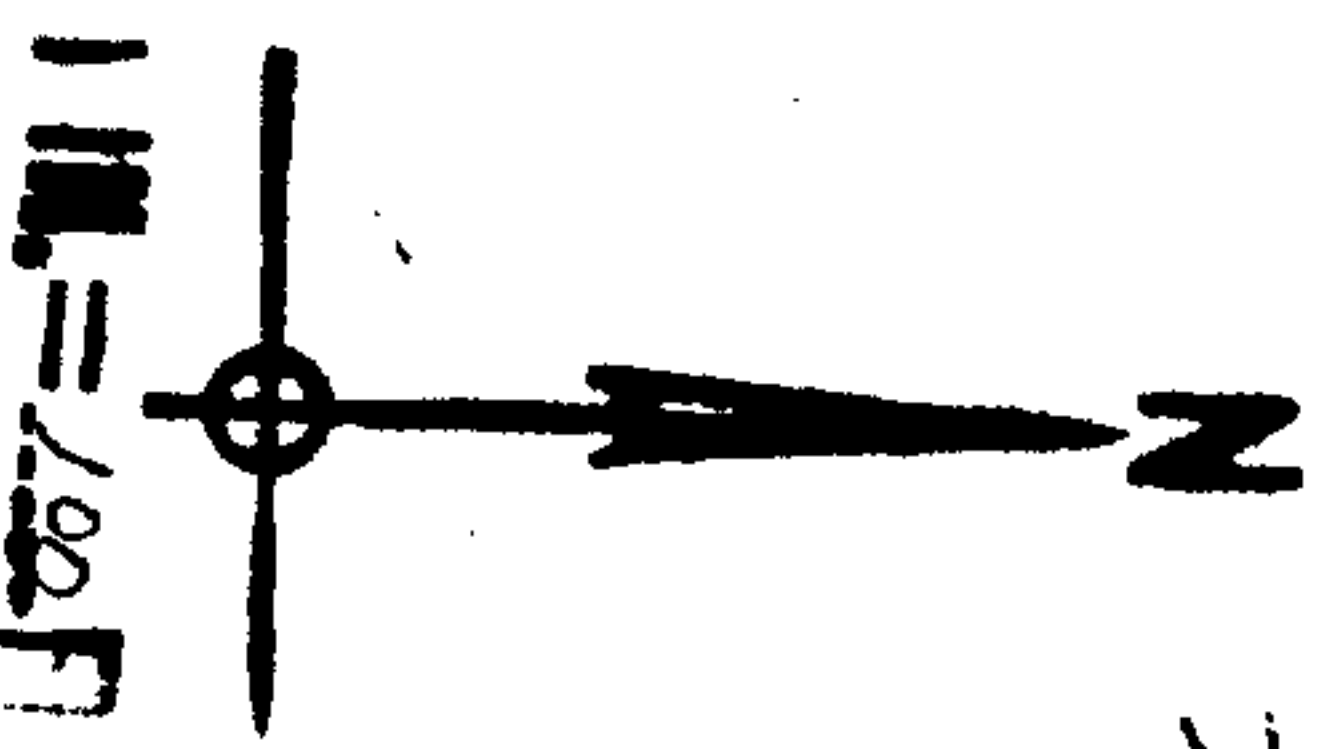


SEE 7-00-026-D



101

APPROVED  
 LORAIN CO.  
 MAP DEPT.  
 DATE 7-23-68  
 BY *H. Bollert*  
 9/27/68 RK



1969

-065  
 20.54 A.  
 -063  
 20.64 A.

-024  
 .03 A.  
 300

-026

368

29

14

100