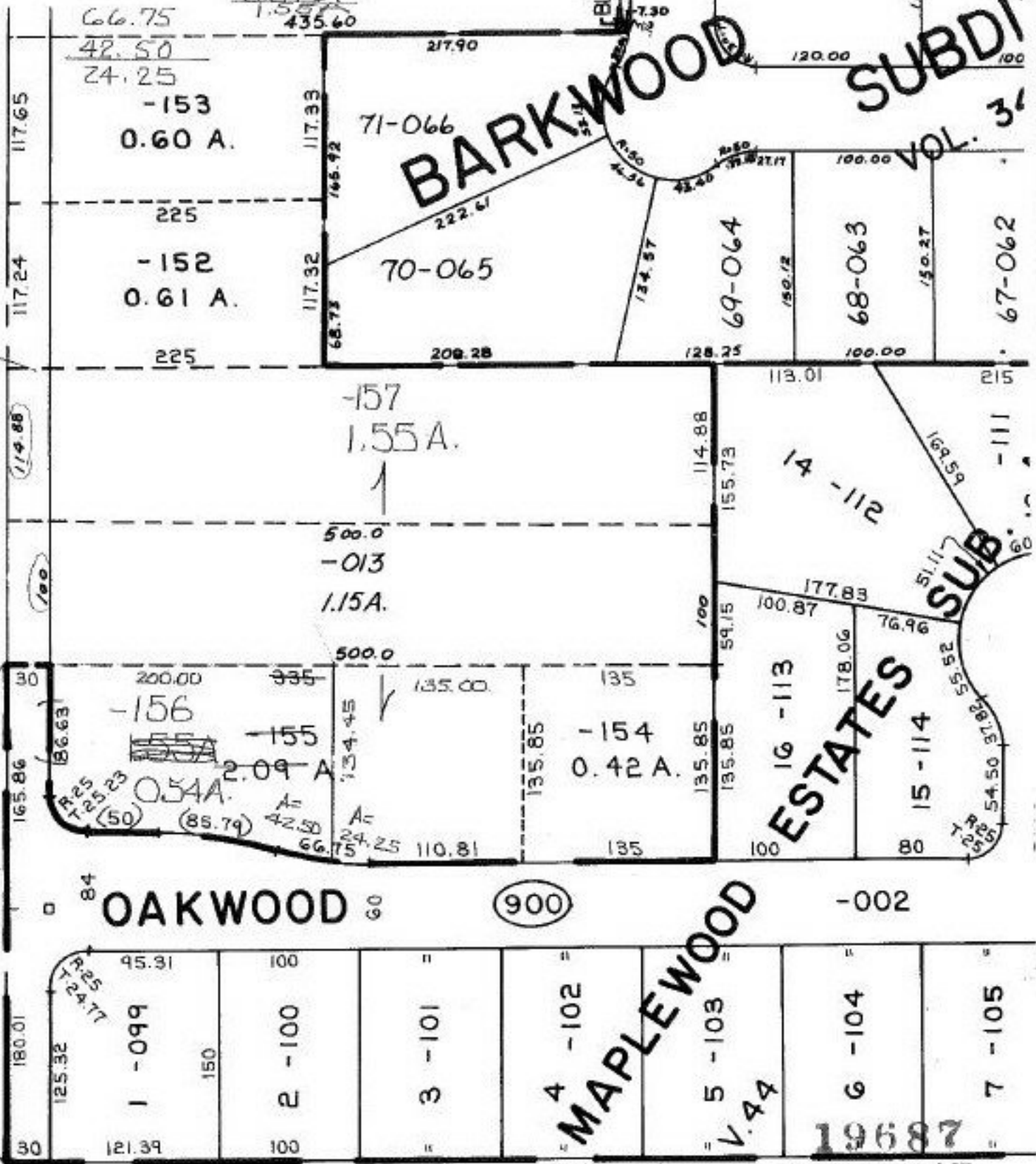


335.00
200.00
135.00

2.09 A
0.54 A
1.55
435.60



SEE 3-00-016-B

345.87
165.86
119.88
100

03-00-006-000- PRIOR INST. O.R. 232/323
 SURVEYED BY: M. G. HURA
 C-1: 43, 478

APPROVED
 LORAIN CO.
 MAP DEPT.
 DATE 12-4-91
 PAGE 3-00-006-A
 BY CAROLYN FRANCIS
 VOID AFTER # 19687

1/17/92

Pt. - 0