

PRIOR INST. 1244/620-623

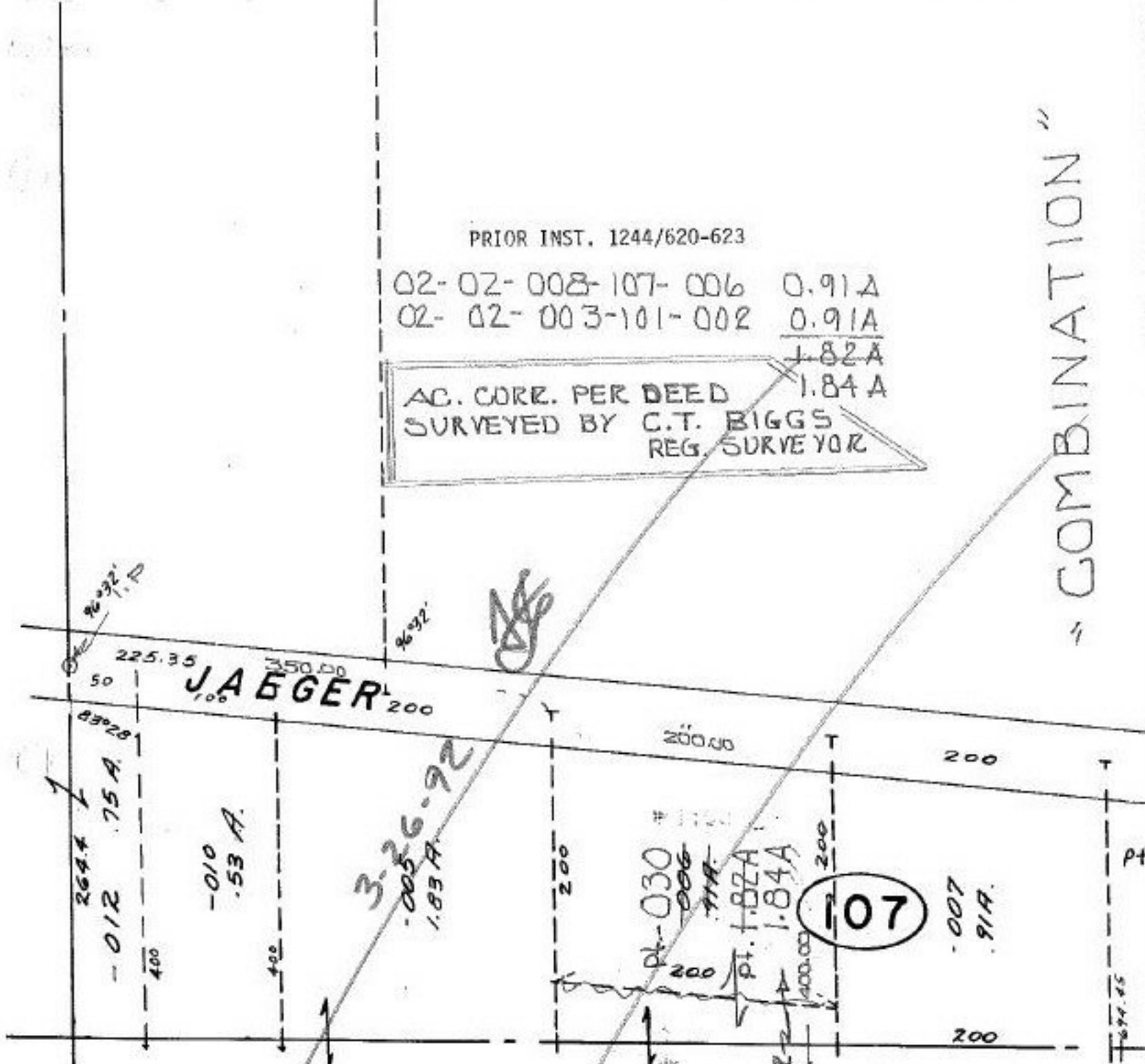
02-02-008-107-006 0.91A

02-02-003-101-002 0.91A

1.82A

AC. CORR. PER DEED 1.84A
SURVEYED BY C.T. BIGGS
REG. SURVEYOR

"COMBINATION"



VOID

SM 4/29/92
19682

APPROVED	
LORAIN CO.	
MAP DEPT.	
DATE 11-22-91	
PAGE 2-02-008-A	
BY CAROLYN FRANCIS	
VOID AFTER #	19682