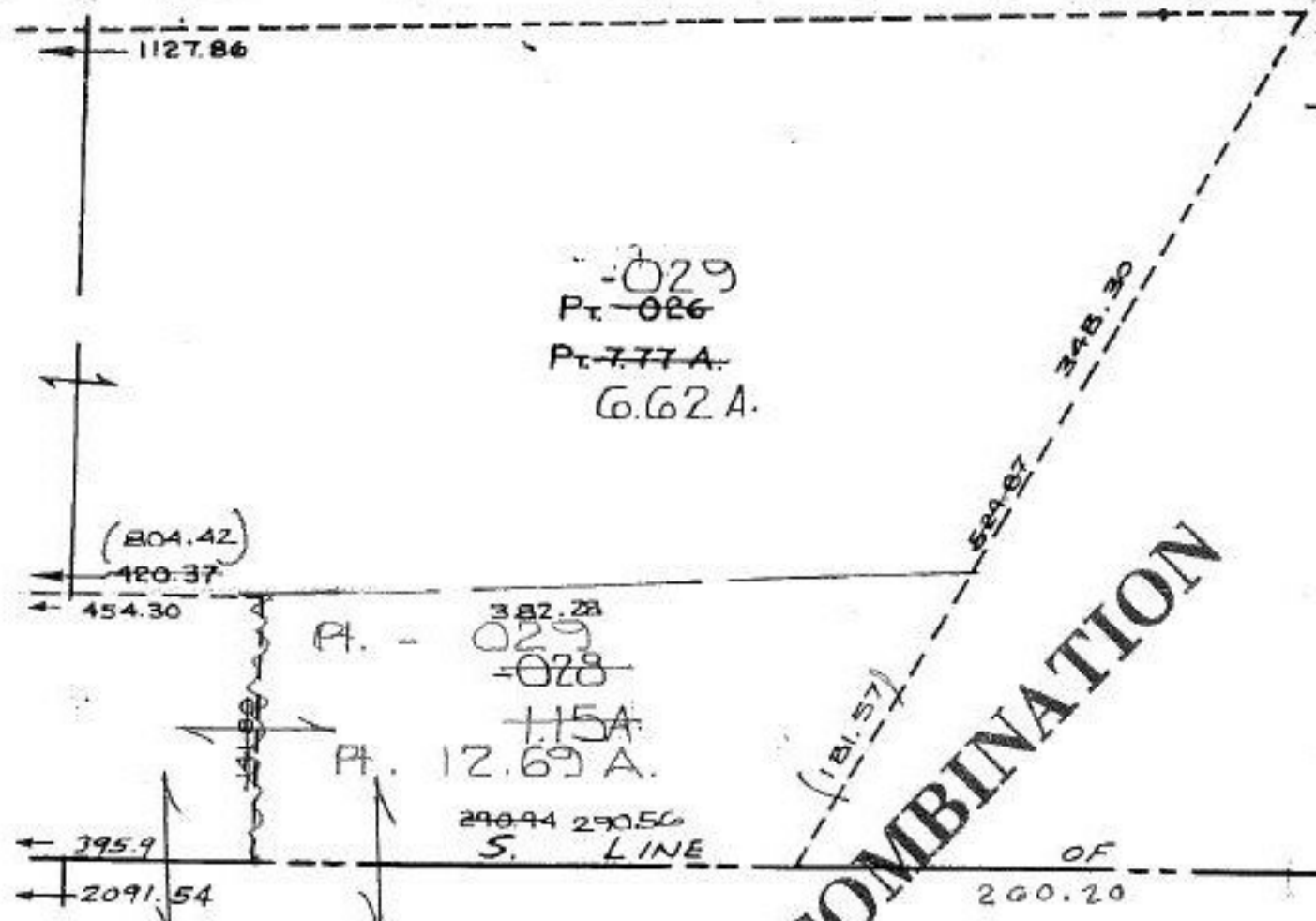


025 1.21 A
 021 028 1.15 A
 027A 028 10.41 A
 12.77 A



COMBINATION

06-23-021-000-025 028 & 06-24-174-000-028

529.87 7.77 A
 181.57 1.15 A
 548.30 6.62 A

06-23-021-000-025 PRIOR INST. O.R. 132/881
 SURVEYED BY: KS ASSOC. C-1: 250,000

19600

APPROVED
 LORAIN CO.
 MAP DEPT.
 DATE 10-7-91
 PAGE 6-48
 BY CAROLYN
 BY FRANCIS
 VOID AFTER # 19600

5/19/92
19659

APPROVED
 LORAIN CO.
 MAP DEPT.
 DATE 11-12-91
 PAGE 6-48
 BY CAROLYN
 BY FRANCIS
 VOID AFTER # 19659

Pt. 022
 Pt. 2711 A

COMBINATION