



COMBINATION

5/19/92
19659

APPROVED	11-12-91
LORAIN CO.	PAGE → 6-48
MAP DEPT.	CAROLYN
DATE	BY PER A N C I S -
PAGE	VOID # 19659
DATE	196603

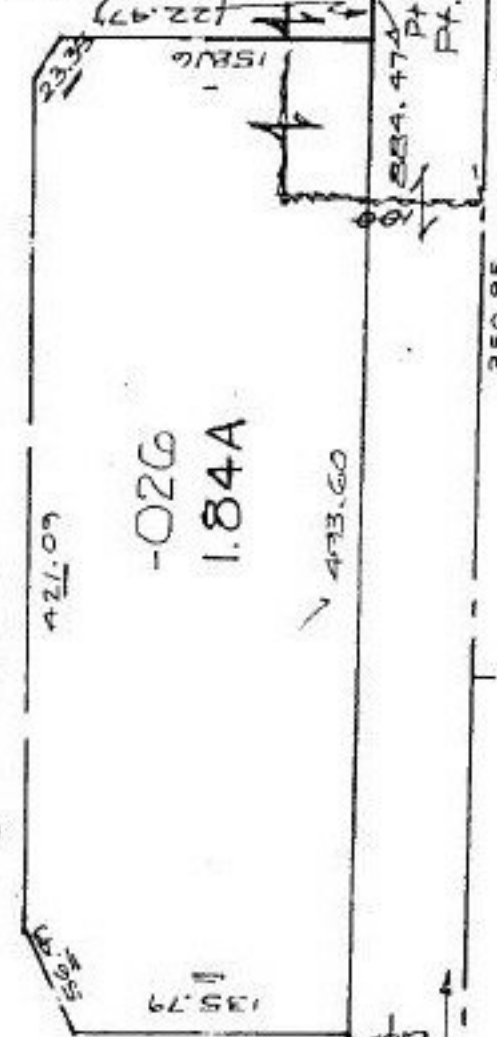
- 029
PT. 028
PT. 10.79A
10.41A
12.69A

APPROVED	17.06
DATE	6-48
BY PER A N C I S -	TRANS. S. S.
VOID #	19659
DATE	196603

② #19602
#19536

③
06-24-174-000-
PRIOR INST. O.R. 438/334
KS-ASSOC. G=1:125,000

③
PT. 027
PT. 024
PT. 13.85A
26.98A



COMBINATION

06-23-021-000-1025, 028 & 06-24-174-000-028