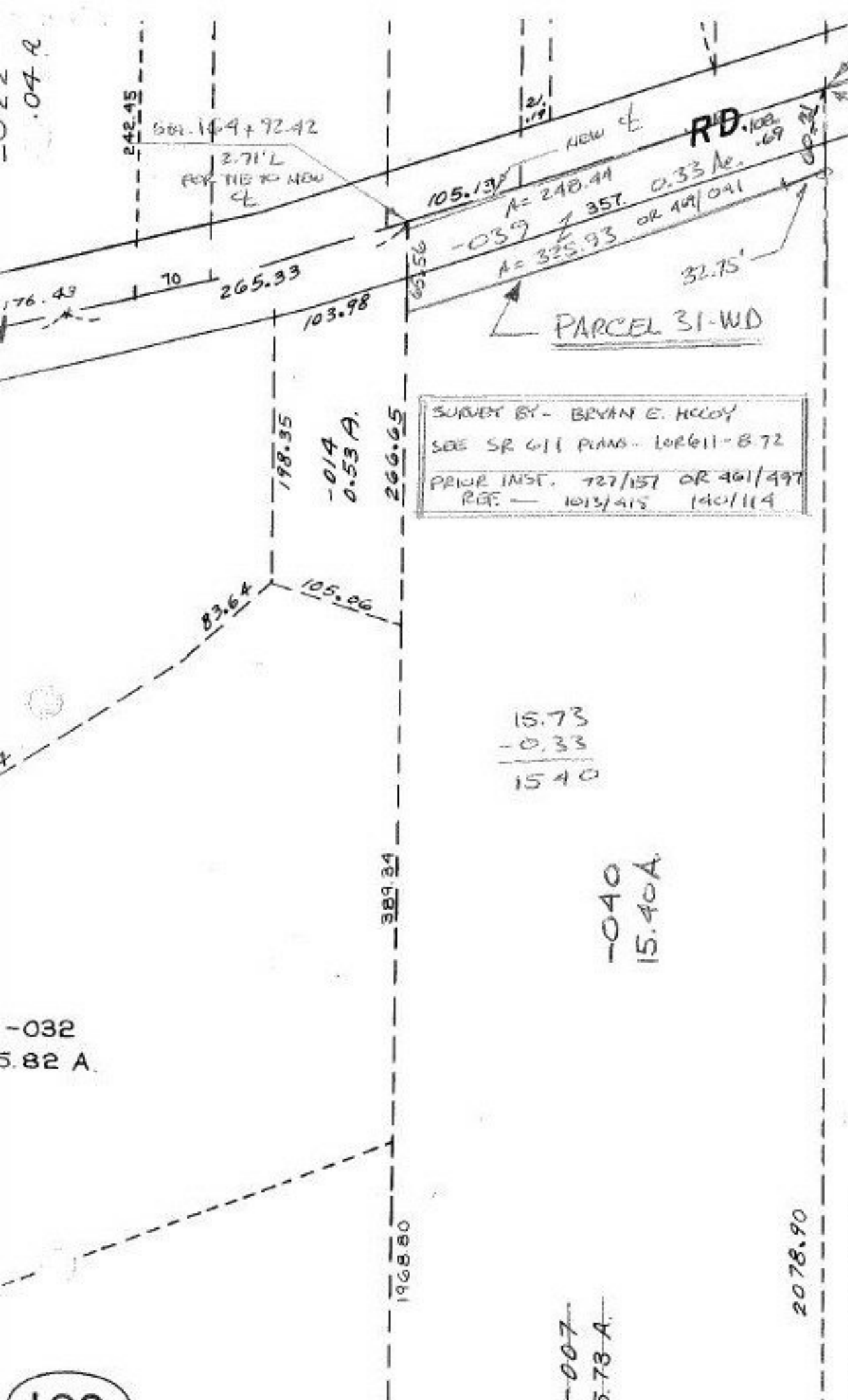


0.04 A



6 COURSE
 TIE PT. TO SE
 CORNER OF DL 7
 THIS PT. IS SA-
 108 + 49.52

NEW CL IS 3.21' S. OF
 ABOVE REFERENCED
 POINT AT A BEARING
 OF S 20°-39'-34"E

SN 12/27/91
 #19835

APPROVED
LORAIN CO.
MAP DEPT.
DATE 11-26-91
PAGE 3-00-007-A
BY T. McKeon
VERB AFTER 19635

00-007-B

102