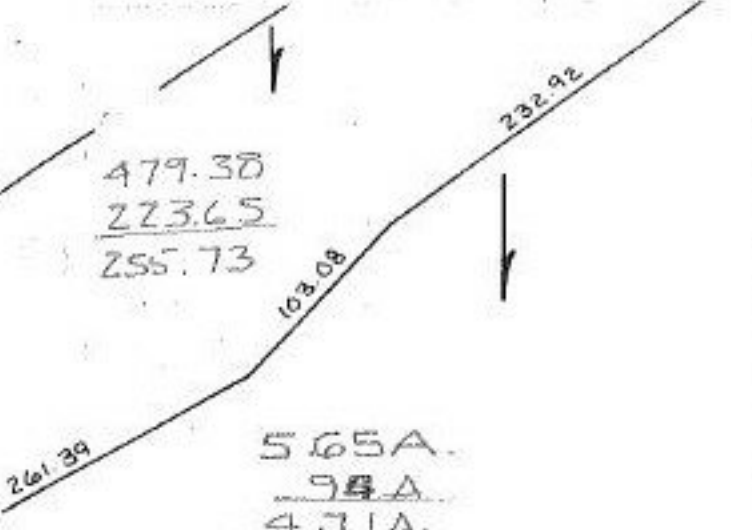


479.30
223.65
255.73



565A.
94A
4.71A.

Note: This block
extends to the N.
side of SR 10

-073
15.69 A.

-087
1.57 A.

0.94 A.

0.88
0.65 A.

14.097
Pt. 4.71A.

0.50 A.

0.50 A.

0.46 A.

0.64 A.

-061

-062

0.68 A.

OBBERLIN - CLEVELAND
568.59

FROM + R OF ARCHER
BUTTERNUT RIDGE RD
AKA OBBERLIN CLEVELAND RD

11-00-070-000- PRIOR INST. O.R. 263/173
SURVEYED BY: DANE A. HAPONEK Reg. Surv.
C-1: 71,423

8/27/92
19634

APPROVED
LORAIN CO.
MAP DEPT.
DATE 10-29-91
PAGE 11-00-070-B
BY CAROLYN
FRANZ
VOID
AFTER 11/19/94

NORTH AS TO SOUTH DISTANCE
DO NOT SCALE - PAGE NEEDS REDRAWN

-065
8.23 A.