

395.9  
 2091.54  
 290.94  
 S. LINE  
 OF  
 260.20  
 800.08  
 BRACE  
 539.58

②

PT. -028  
 PT. ~~10.79A~~  
 10.41A

③

617.13

STA 1/10/92  
 19602

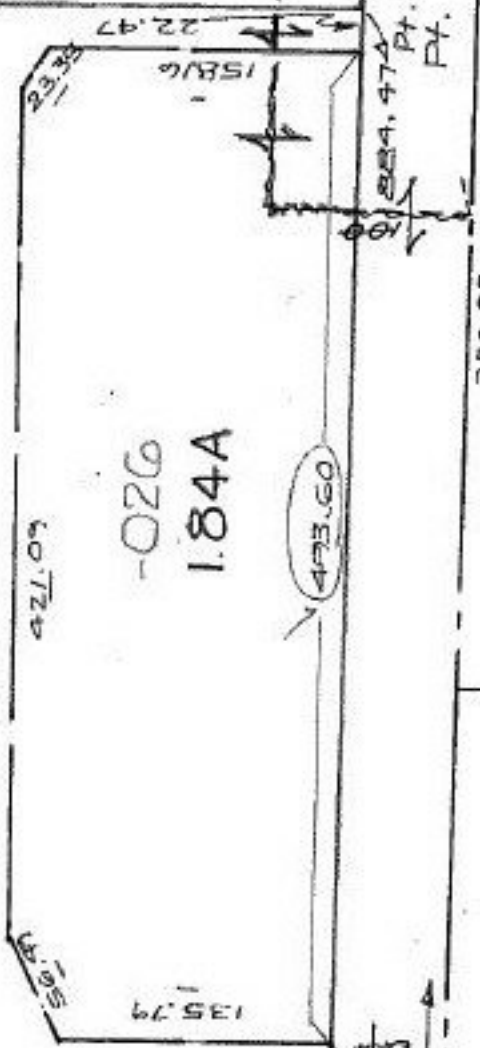
APPROVED
LOBBIN CO.
MAP DEPT.
DATE 10-7-91
BY CAROLYN FRANCIS
TOD # 19602

#19602  
 #~~19536~~

06-24-174-000-  
 PRIOR INST. O.R. 438/334  
 KS ASSOC. C=1:125,000

13.62 A  
 -024  
 -027  
 1385A  
 17

26.98A



1515.43  
 #19536  
 #19538  
 1555.60  
 578.35

PT. -023  
 PT. 2.24A

350.85

191.73

1515.93

lap