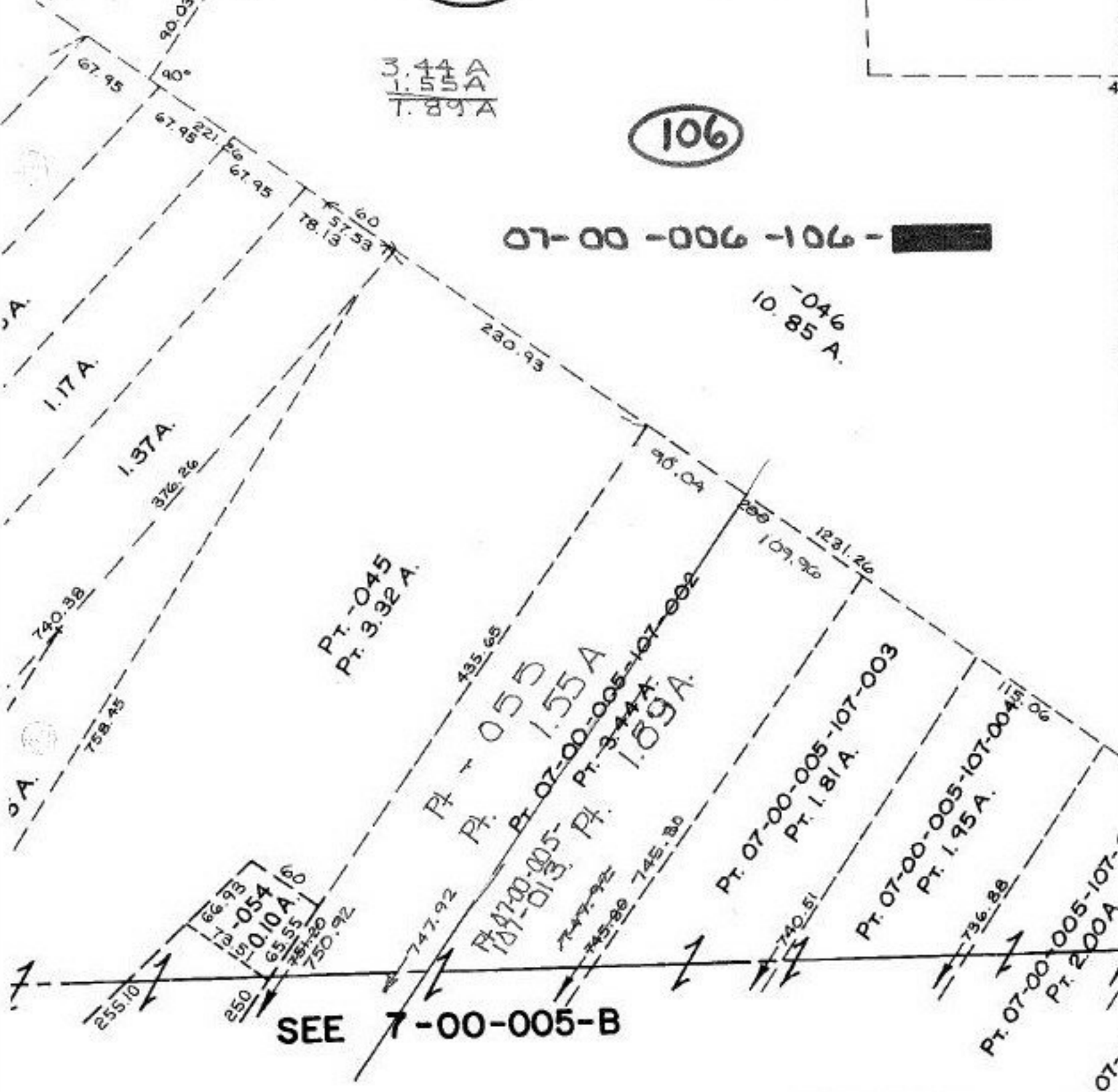


3.44 A
 1.55 A
 1.89 A

106

07-00-006-106-

-046
 10.85 A.



SEE 7-00-005-B

07-00-005-107- 07-00-006-107-
 PRIOR INST. 1243/751 1287/584
 SURVEYED BY: DANE A HAPONEK REG. SURVEYOR

7/15/92
 19599

APPROVED
 DRAIN CO.
 CAP DEPT.
 10-8-91
 PAGE 7-00-006-D
 BY CAROLYN
 FRANCIS
 VOID
 AFTER # 19599