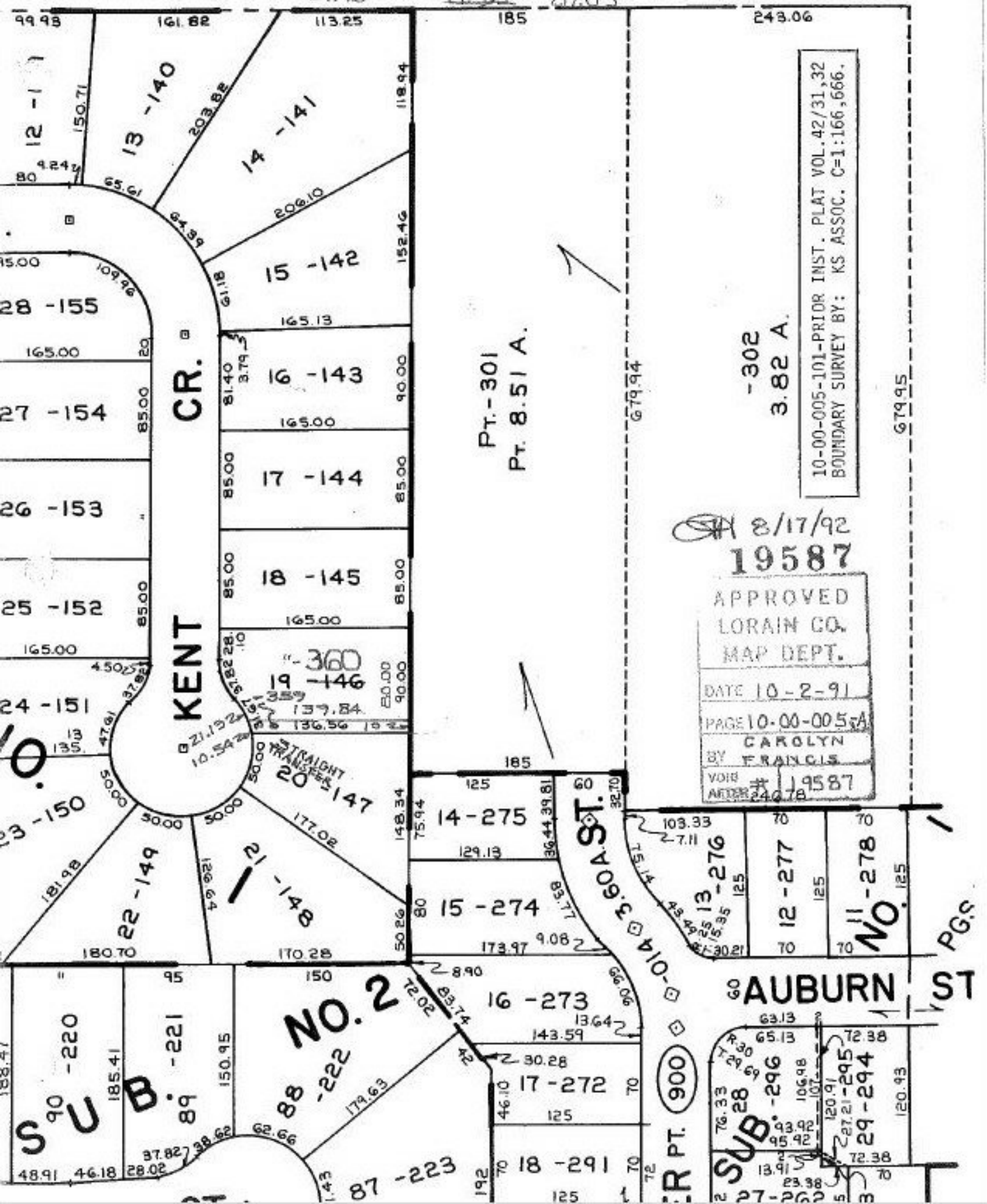


Acc. Dist. 31.67
21.13

97.57
10.54
87.03

28.10
37.82
21.13
87.05



10-00-005-101-PRIOR INST. PLAT VOL. 42/31, 32
 BOUNDARY SURVEY BY: KS ASSOC. C-1:166, 666.

- 302
 3.82 A.

8/17/92
 19587

APPROVED
 LORAIN CO.
 MAP DEPT.
 DATE 10-2-91
 PAGE 10-00-005
 BY CAROLYN FRANCIS
 VOID AFTER # 19587

NO. 2

SUB. 28

AUBURN ST

PT. 900

SUB. 296
 SUB. 295
 SUB. 294

NO. 278

PG. 5