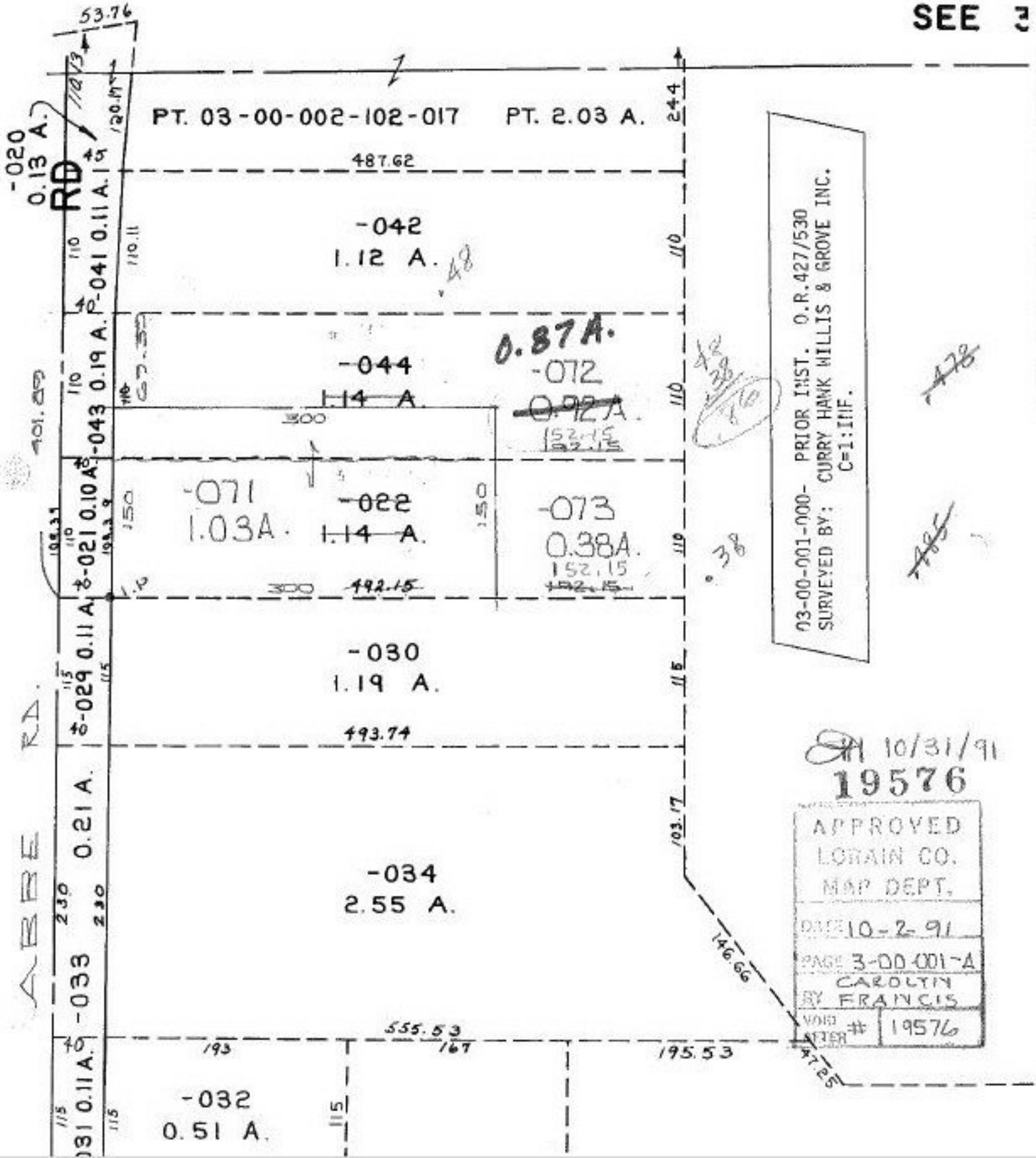


492.15  
 300.00  
 192.15

109.39  
 110.00  
 219.39  
 150.00  
 69.39

022 1.14 A 1.14 A  
 0.76A 0.72 A  
 0.38A 0.92 A

SEE 3



03-00-001-000- PRIOR INST. O.R. 427/530  
 SURVEYED BY: CURRY HANK WILLIS & GROVE INC.  
 C=1:111F.

10/31/91  
 19576

APPROVED  
 LORAIN CO.  
 MAP DEPT.  
 DATE 10-2-91  
 PAGE 3-00-001-A  
 CAROLYN  
 BY FRANCIS  
 VOID AFTER # 19576